

2000



---

**Cedetaş Architecture** is a design and architecture firm based in Turkey, Istanbul that is established by Serkan Atilla Cedetaş.

The purpose and vision of Cedetaş Architecture is to reach the best design by including the combination of factors specific to the project such as architectonic, material, budget and culture.

It produces permanent prestigious and aesthetics projects from every angles about many different projects and work experience acquired at the end of the process for building public and private sector by developing the partnership developed with the design offices and construction companies.

Our teammates have proven themselves as a qualified team in office and in construction site, have multidisciplinary approach with a domination to the process of operation and are enough to bring the project to life in many different functions.

## Selected Project

PROJECT NAME	DESIGN	CONSTRUCTION	DATE	LOCATION
ALCE HQ	✓	✓	2011	Pendik, İstanbul
BEŞİKTAŞ FISH MARKET <i>v.02</i>	✓	✓	2013	Pendik, İstanbul
INSULATOR FACTORY + OFFICES	✓	✓	2011	Pendik, İstanbul
UŞAK TOWN HALL	✓		2013	Uşak
APARTMENT BUILDING		✓	2013	Suadiye, İstanbul
APARTMENT BUILDING		✓	2013	Kadıköy, İstanbul
WTE, EVN GRUPPE	✓		2013	Manama, Bahreyn
EGD MANAGEMENT OFFICE	✓	✓	2012	Pendik, İstanbul
FÜLYA CULTURAL CENTER / FOOTBRIDGE	✓		2012	Beşiktaş, İstanbul
SOS ! FAST FOOD CHAN	✓		2011	İstanbul
EREN F ACTORY + OFFICES	✓	✓	2013	Pendik, İstanbul
EROL GERHARD DEN İZOĞLU HOME	✓	✓	2013	Ataşehir, İstanbul
ARAS BOLAYIR HOUSE	✓	✓	2009	Göztepe, İstanbul
EYÜP URBAN PROJECT	✓		2010	Eyüp, İstanbul
ANTAKYA 124	✓		2008	Antakya
TATKAR OFFICES	✓	✓	2008	Bakırköy, İstanbul
DENİZLİ TOWN HALL	✓		2011	Denizli
BENETTON T EHERAN	✓		2011	Tahran, İran
FIGARO	✓		2009	Nişantaşı, İstanbul
ORTAKÖY CRAFT BAZAAR	✓		2010	Beşiktaş, İstanbul



---

# Insulator Factory

---

**CLIENT** Alce Elektrik A.Ş.  
**LOCATION** Pendik, İstanbul  
**TYPE** Fabrika ve Yönetim Binası

**CONSTRUCTION AREA** 3.000 m<sup>2</sup>  
**PROJECT AREA** 3.000 m<sup>2</sup>  
**PROJECT DATE** 2011-2012  
**STATUS** Tamamlandı

**ARCHITECT** Serkan Atilla Cedetaş  
**DESIGN TEAM** Barış Uçar, Ozan Can Er  
**CONSTRUCTION** Cedetaş Mimarlık  
**ELECTRIC** Pover Mühendislik

**MECHANICAL** Aksan Mühendislik  
**LIGHTING** Kare Dizayn  
**GRAPHIC DESIGN** Alemnuma  
**PHOTOGRAPHY** Cemal Emden

---

## Insulator Factory + Offices \*

### TRANSPARENT FACTORY DESIGN:

The permeability between locations directly impacts the business of life.

Alce Insulator Factory Istanbul is a project which is based on a closed area about a total of 3,000 m<sup>2</sup> including a production factory and office programs.

It is the first working of a successful company that exports to 40 countries also produces transformers and insulators, in the name of forming the new spirit of enterprise. The main factory building was a prefabricated structure which is mostly conventionally and industrially formed for production.

As the Company has no own property, the arrangements that were made to will only be on industrial productivity rather than permanent solutions about production site and storage areas.

The purpose of the design of office and welcome section. Is to increase the efficiency of the staff, to ensure the integrity between the management and the production and can be confident enough for the visitors adoption.

Firstly the machines that will be installed in the factory building were arranged in order to provide the coherence visually and as a whole. Then showroom space was created at the entrance of the management Office.

Finally, the production offices facade on the higher elevations were designed transparent. In keeping with this goal the stairs are detailed with a light and slim package.

The company's future growth forecast orientations for capacity wa taken into consideration and essential issues wre also provided. Natural stone was applied in contrast of the place's view of steel, glass and industrial hardness.

With polished basalt stone on the ground and derivative flexstone on the walls;which is a type of natural slate ;were used with an innovative approach. It provided easy application and design compared to the very large applications of the same stone called masifi, as it is 2 mm thick, extremely light,and flexible.

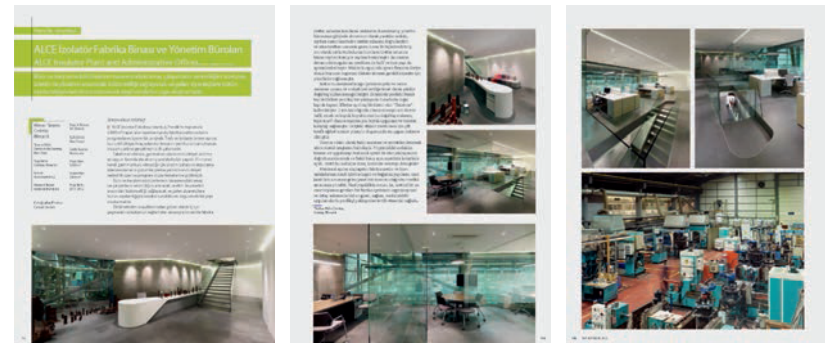
Creating the effect at the entrance it is the most appropriate material for the formation of double-sided curved concave surface.

We are in constant research in order to try out different materials and details and we focus on desingn.

We not only focus on the design or implementation but also we have a holistic look over architecture. The difficulties in the project could easily overcome through an unordinary and flexible perspective of ours. Even these difficulties turn into advantages during the process.

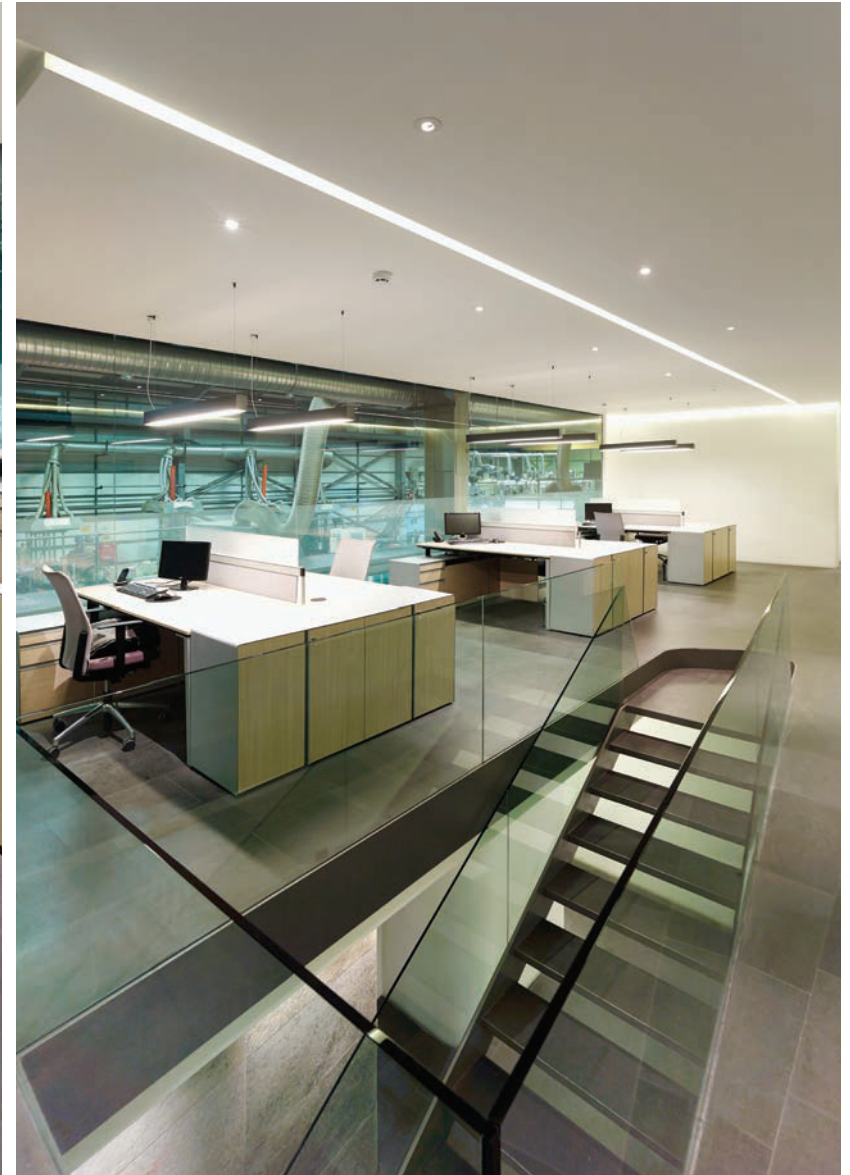
The usual factory production and offices conservative and internal structure, became our goal about focusing on to break this point of view. The question of how we can do it allows us to choose innovative,the most beautiful ,robust approach.

\* Building Magazine, Number 377, April 2013

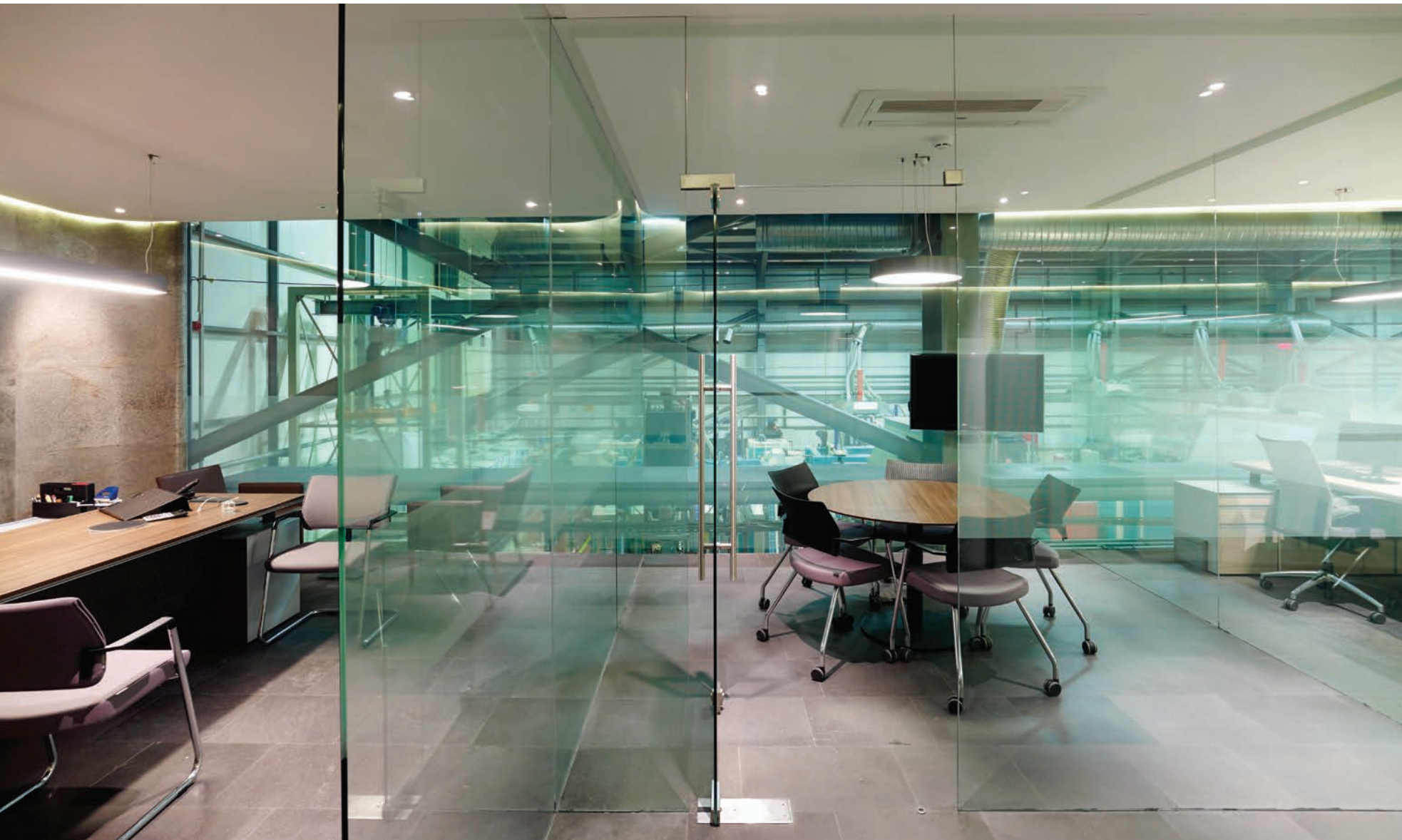








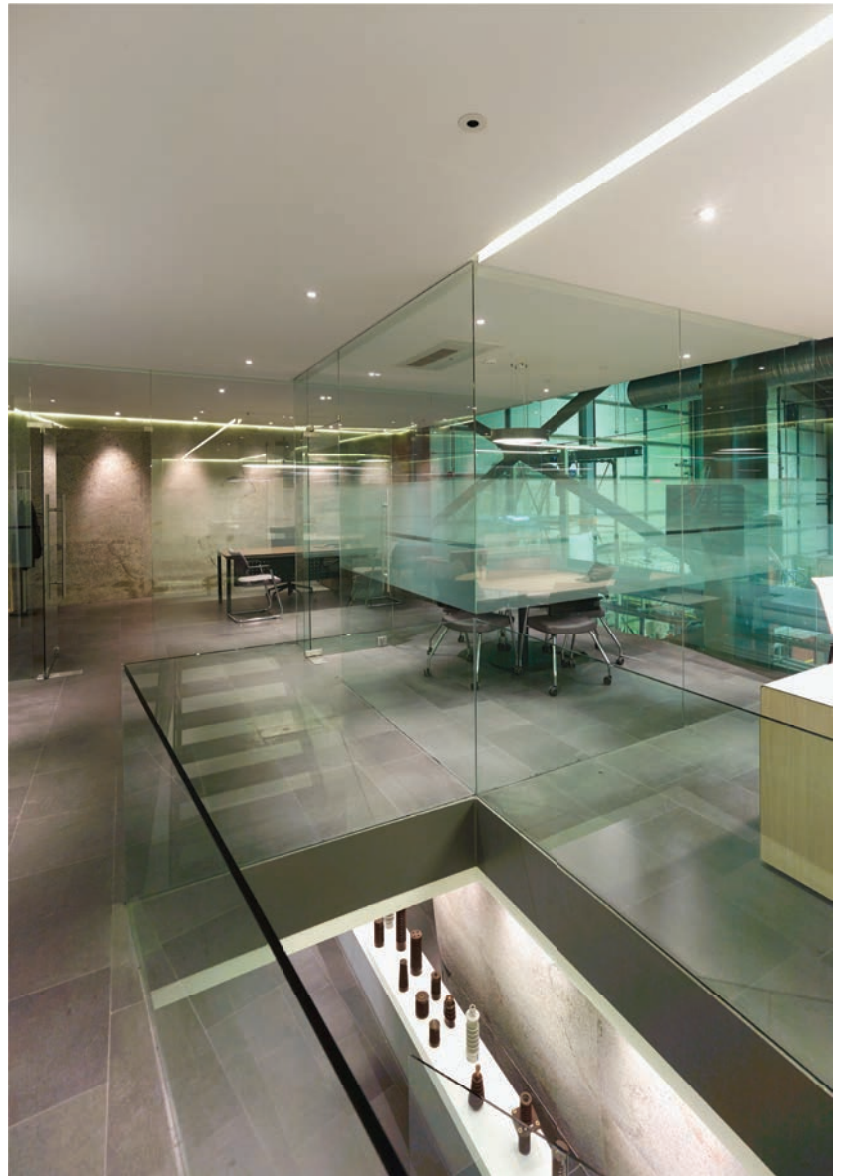
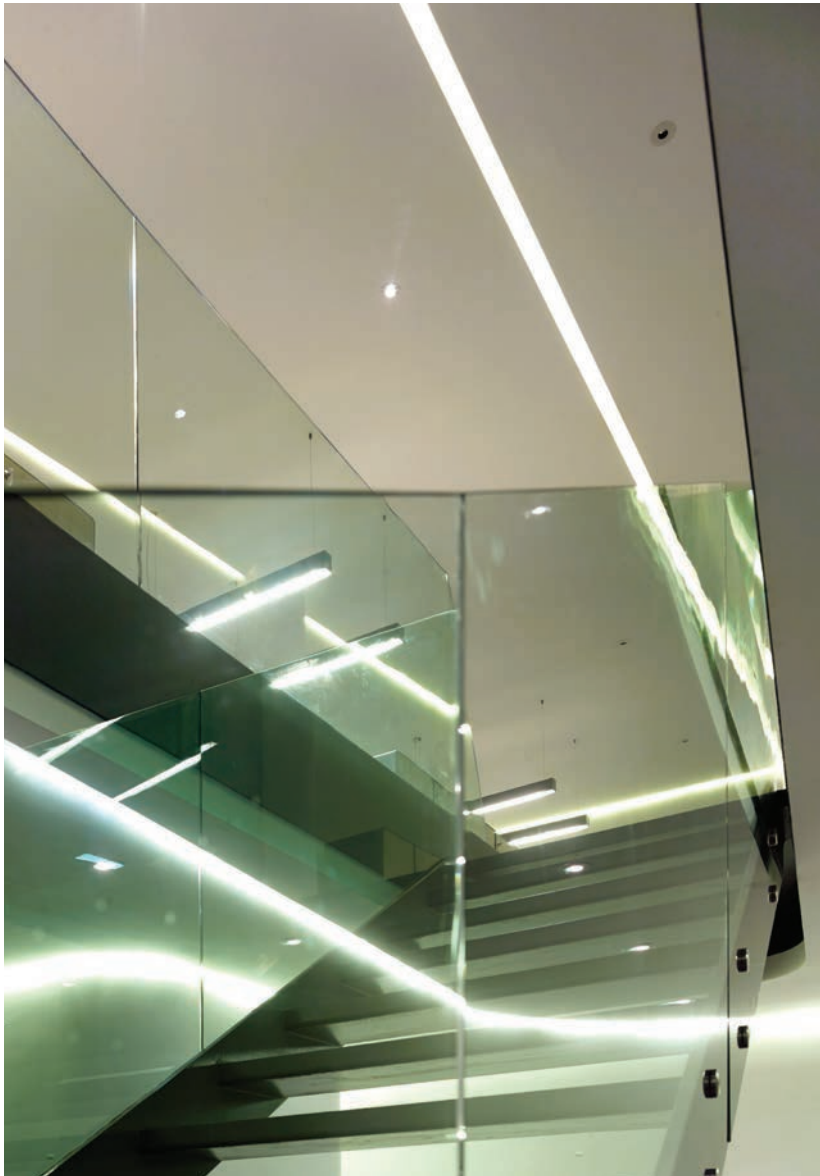








## Insulator Factory







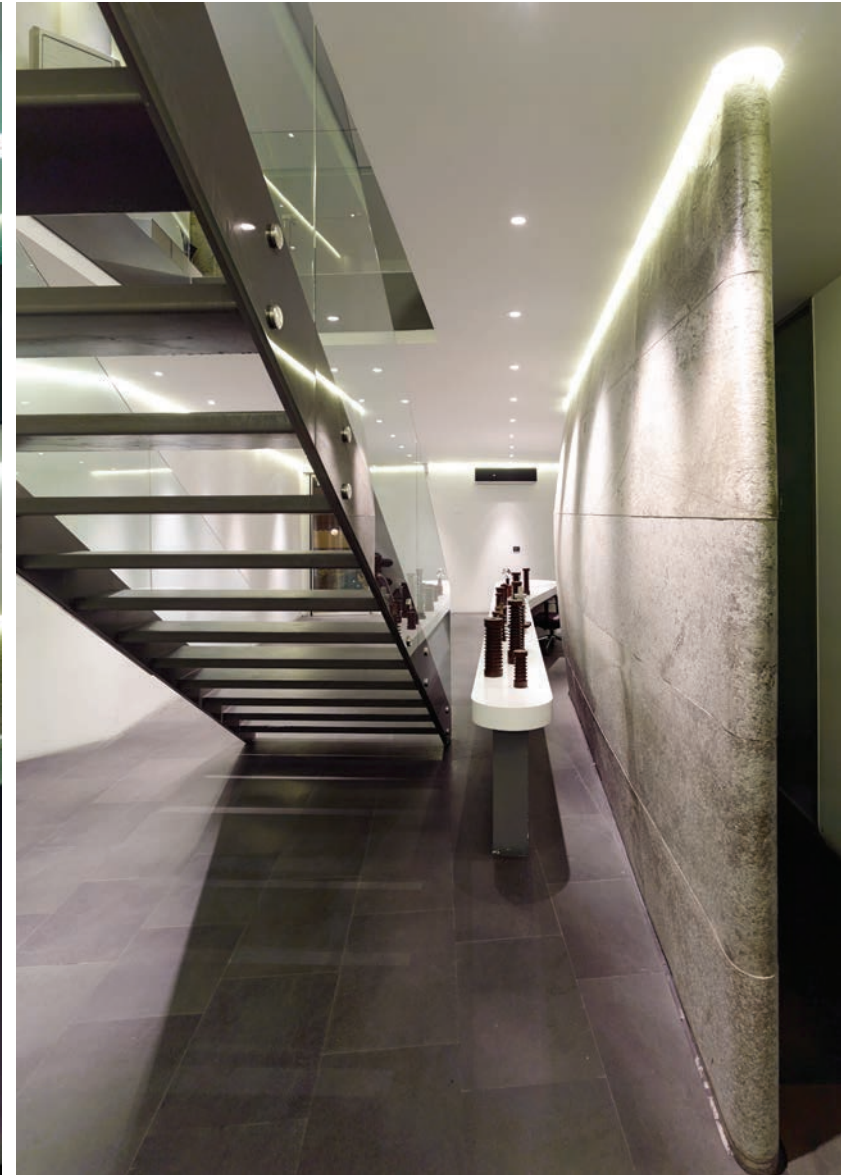
















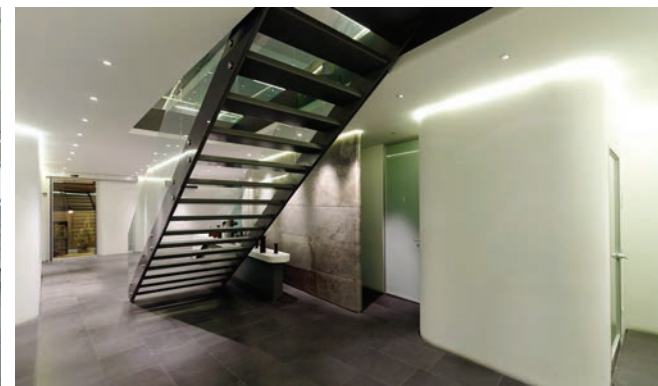
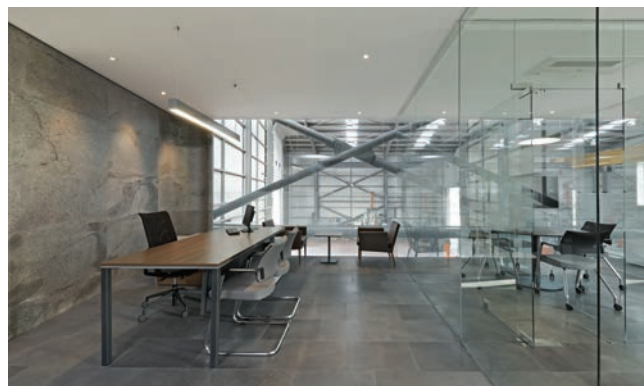
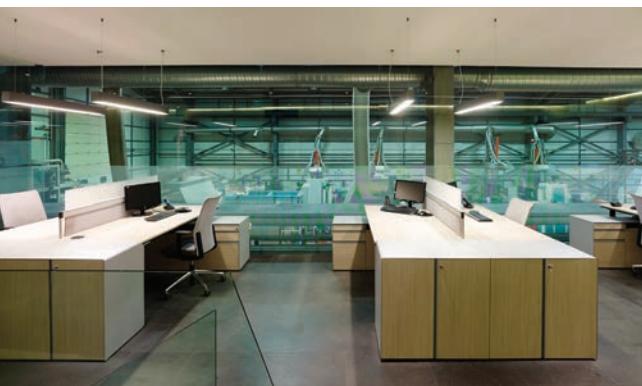
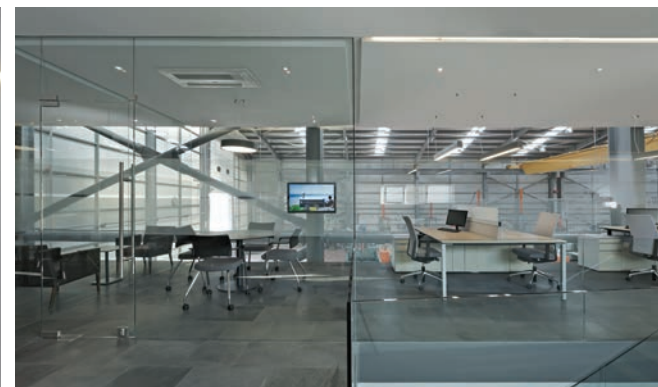
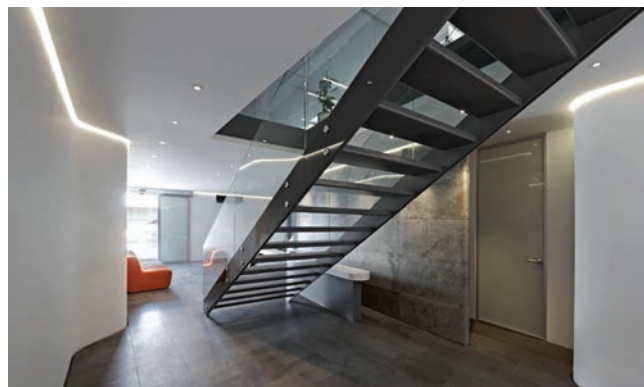
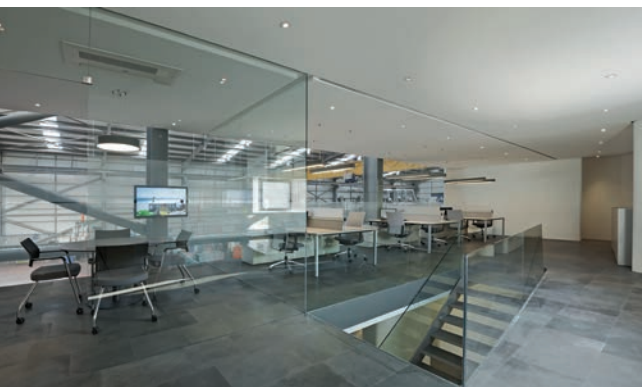
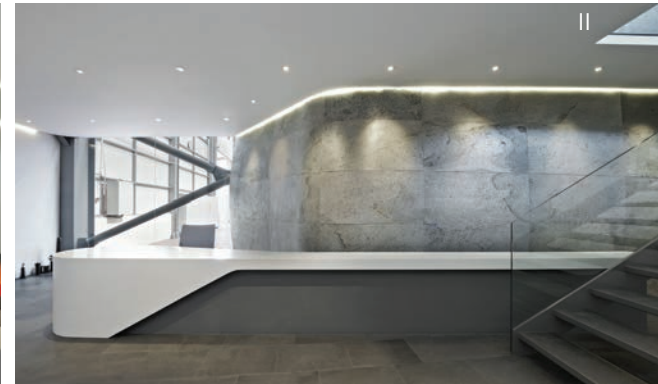




## Insulator Factory





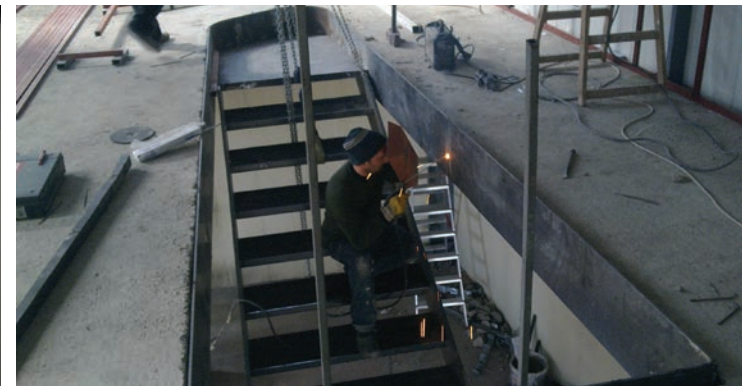
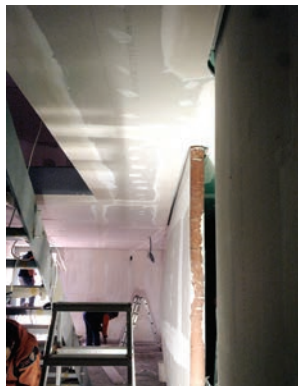


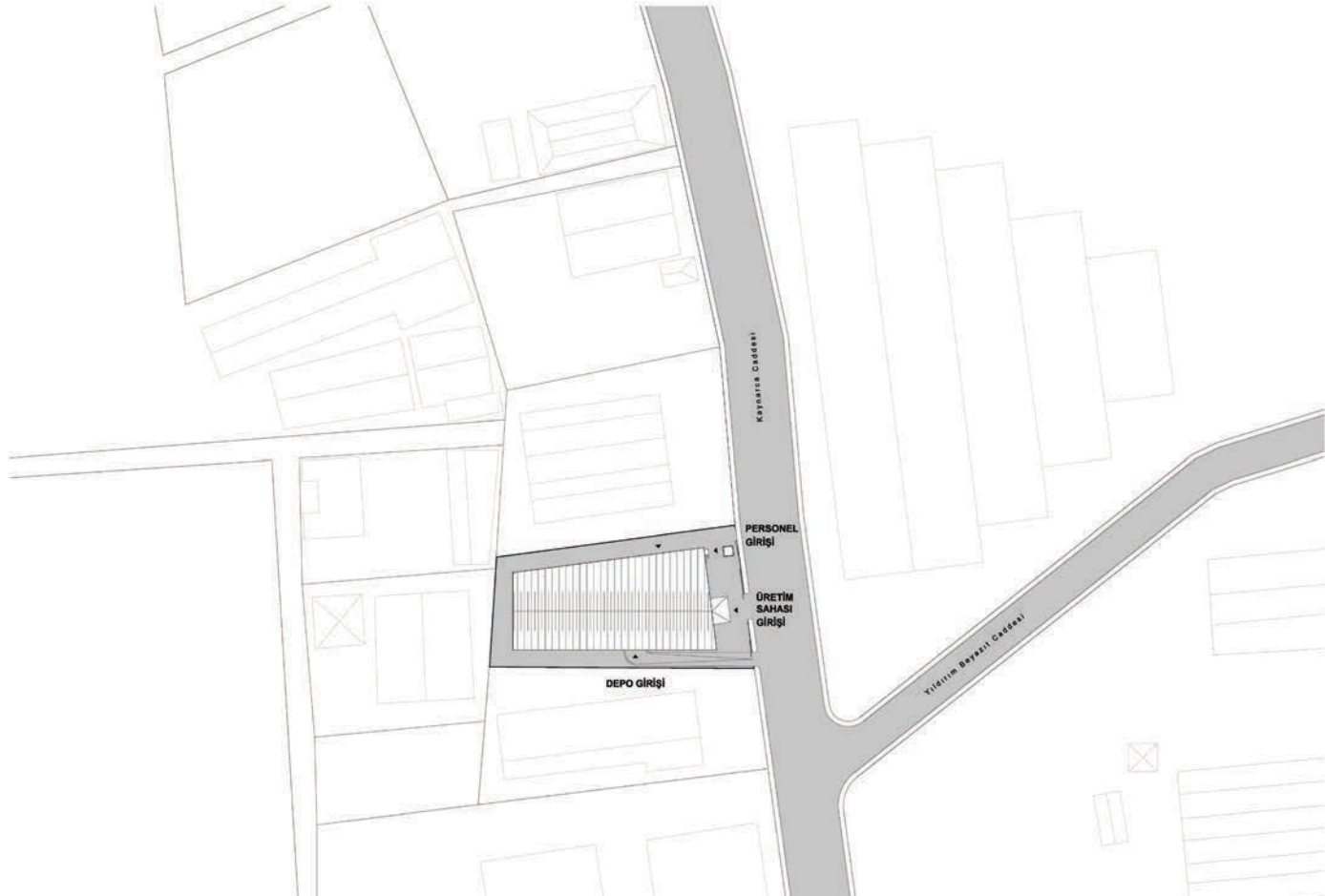


## Insulator Factory

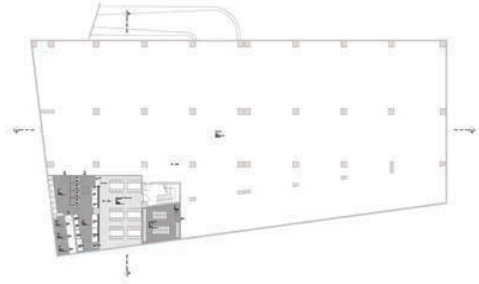




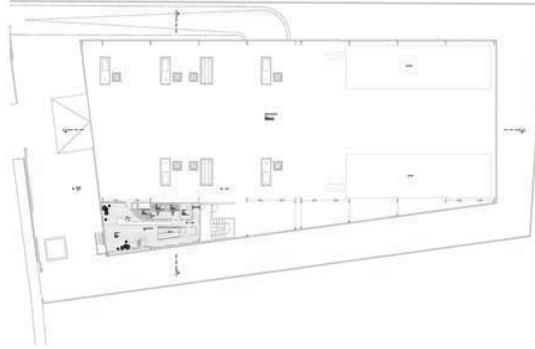




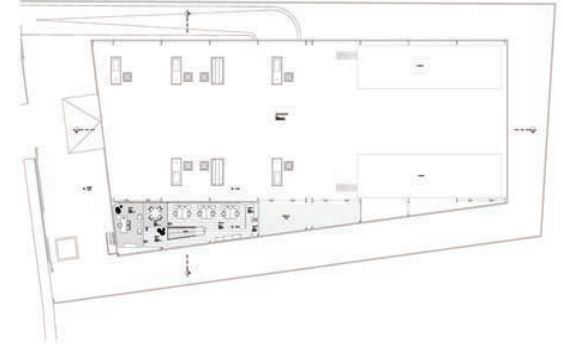




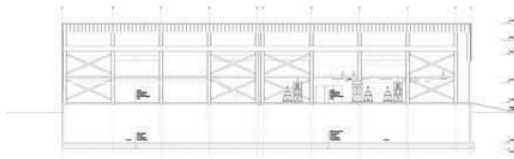
BODRUM KAT PLANI  
ÖLÇEK: 1/100



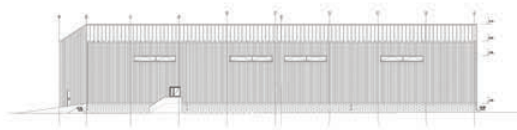
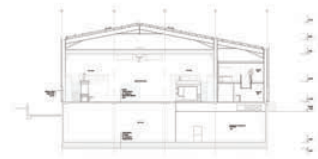
ZEMİN KAT PLANI  
ÖLÇEK: 1/10



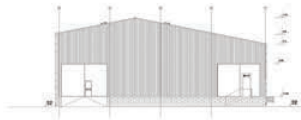
1. KAT PLANI  
ÖLÇEK: 1/100



KESİT A-A  
ÖLÇEK: 1/100



KUZEY GÖRÜNÜŞ  
ÖLÇEK: 1/100



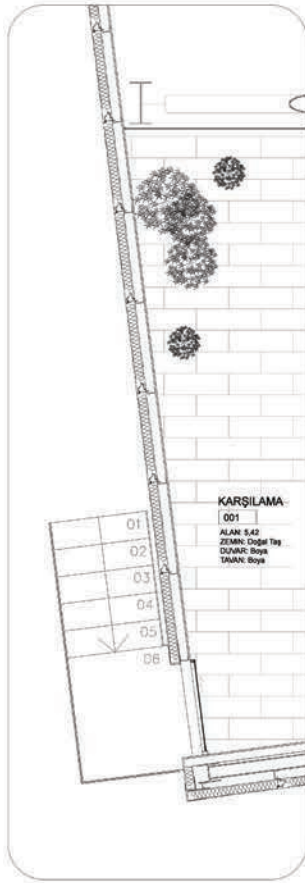
DOĞU GÖRÜNÜŞ  
ÖLÇEK: 1/100



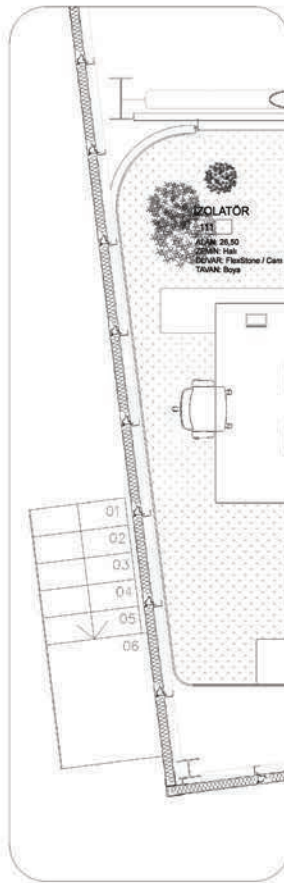
GÜNEY GÖRÜNÜŞ  
ÖLÇEK: 1/100



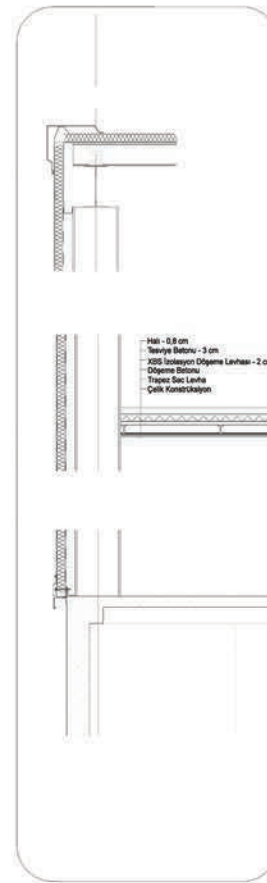
BATI GÖRÜNÜŞ  
ÖLÇEK: 1/100



PLAN  
+1.00 KOTU



PLAN  
+3.75 KOTU



KESİT  
A-A



KESİT  
B-B

---

# ALCE

Headquarter \*

---

**CLIENT** Alce Elektrik A.Ş.  
**LOCATION** Pendik, İstanbul  
**TYPE** Yönetim Binası

**CONSTRUCTION AREA** 2.800 m<sup>2</sup>  
**PROJECT AREA** 2.800 m<sup>2</sup>  
**PROJECT DATE** 2010-2011  
**STATUS** Tamamlandı

**ARCHITECT** Serkan Atilla Cedetaş  
**DESIGN TEAM** Barış Uçar  
**CONSTRUCTION** Cedetaş Architecture  
**ELECTRIC** MC Elektrik

**MECHANICAL** Aksan Mühendislik  
**LIGHTING** Kare Dizayn  
**GRAPHIC DESIGN** Alemnuma  
**PHOTOGRAPHY** Cemal Emden



---

## **The Establishment of The new corporate identity with operational offices of the Management and Headquarters Building**

“It’s primarily aimed to emphasize the new management and operational Office buildings new identity of Alce Headquarters Building during the design. According to the scenario created in architectural applications the process was implemented as the building continued to be in use. And renovation project with the exterior will be finalized on ongoing process.

The old invalid to communicate inside type of structure is redesigned in order to make the study areas more active, fresh and convenient to communicate. According to new spatial, preferred details are formed and created especially keeping the integrity of the architectural design in mind..

The new items found life during the application such as mulaj are put on the structure from the beginning to the end.

Especially in places that make separation Work was allowed transparent , and formed the core of the the transition between solid surfaces in space flow, and the description of the locations provided due to the different volumes."

## Continuity of Contact\*

The reconstruction of The Management and operational Headquarters Building and public spaces. That will come to the fore of the new corporate identity.

Architectural applications were implemented according to the scenario created inside the active building and the process is still continuing, the project will be finalized with the renovation of the exterior face work.

The structure of the old ,unable to communicate type of space; was redesigned to make it clear constantly in touch and able to work more actively.

Due to new needed details ,the materials and architectural design integrity were formed in particular .

\*XXI Magazine, Number 110, June 2012





















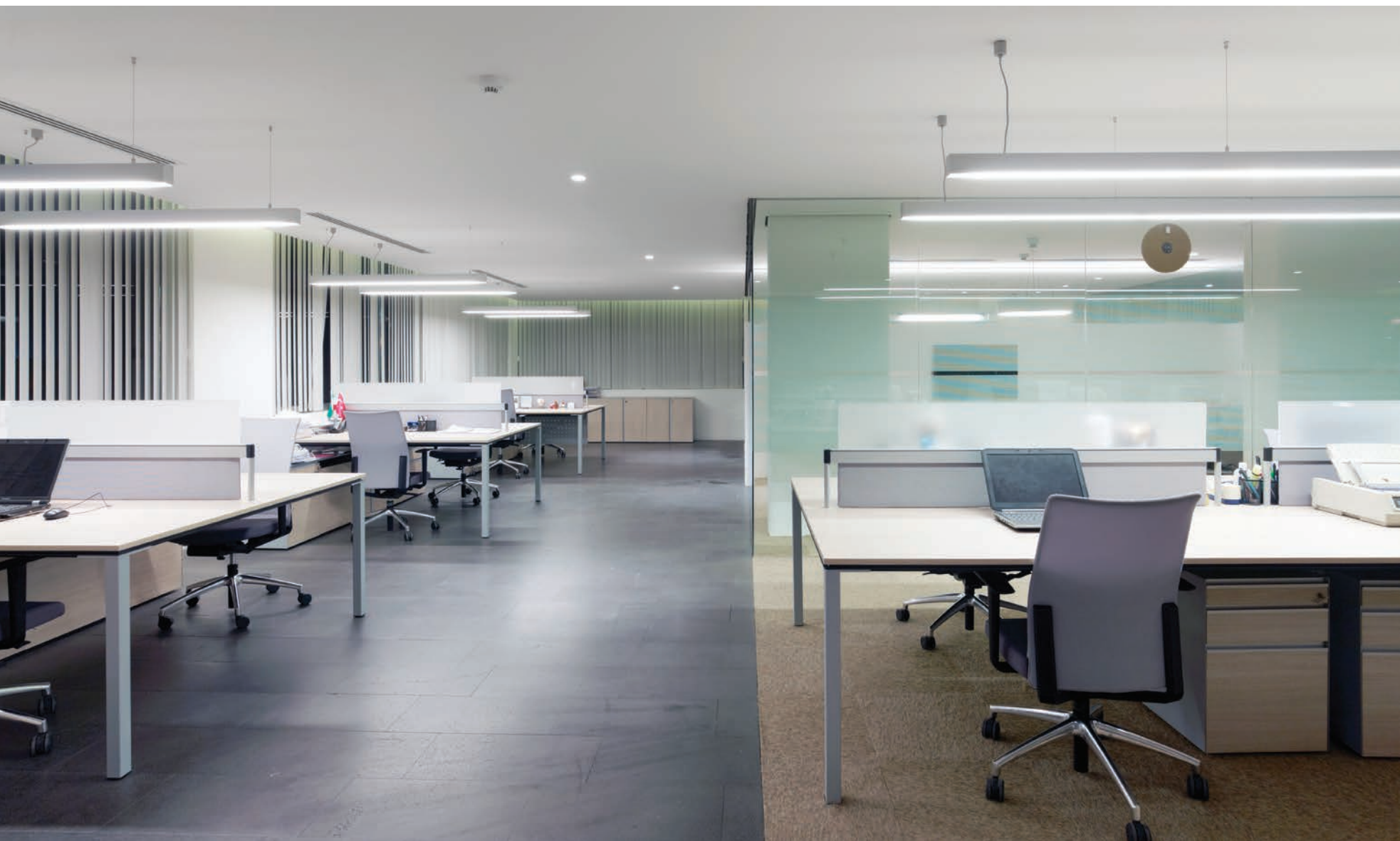








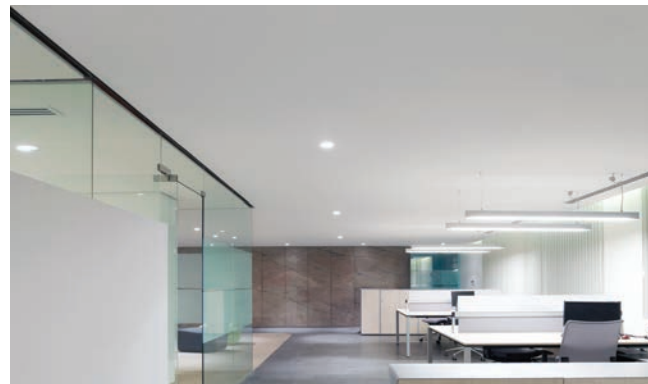
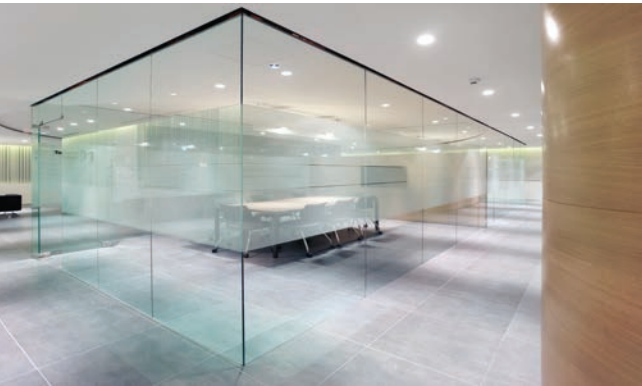




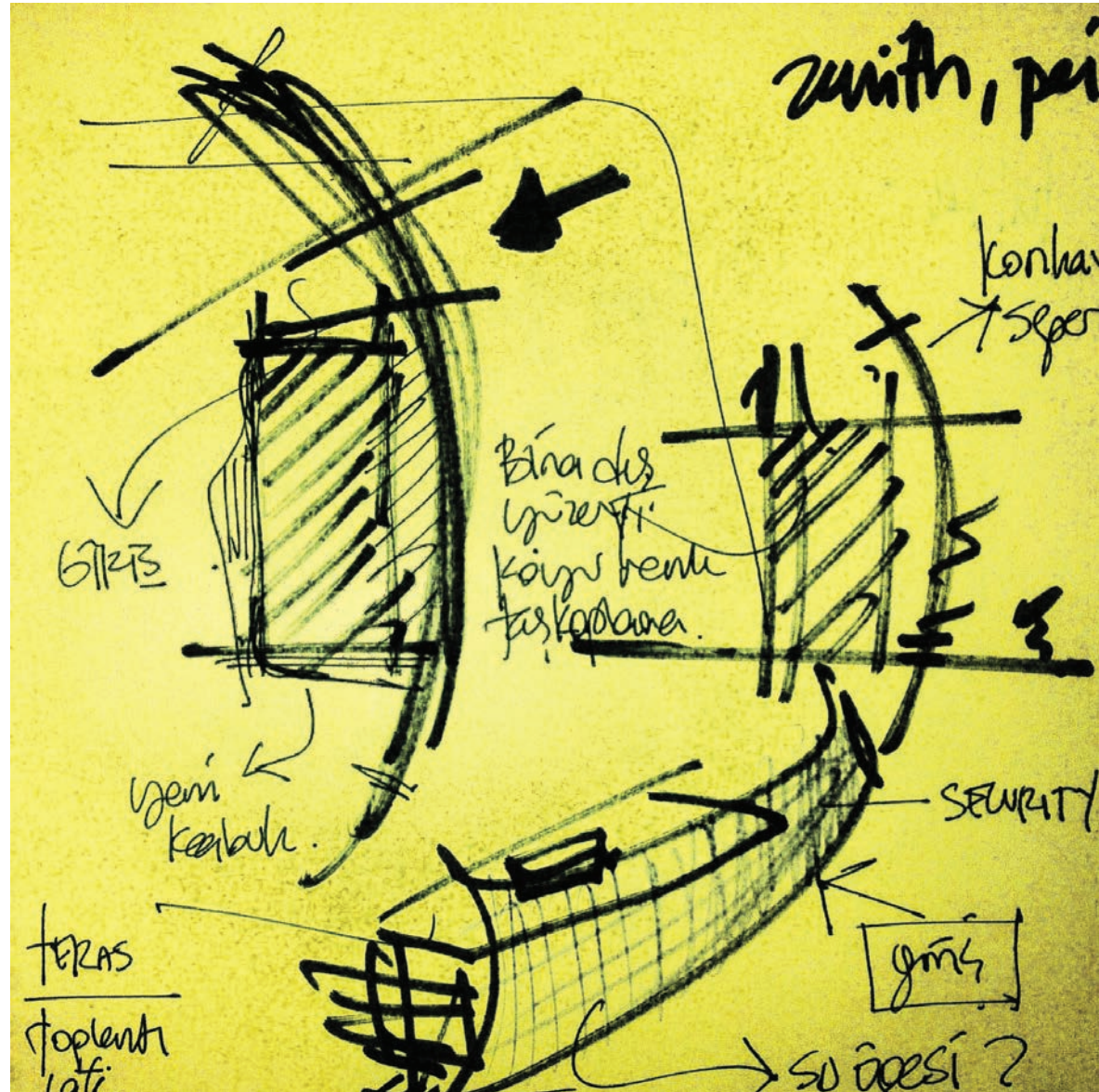


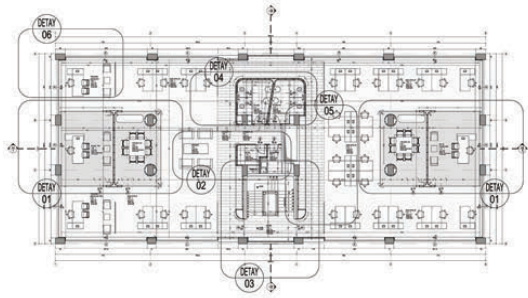




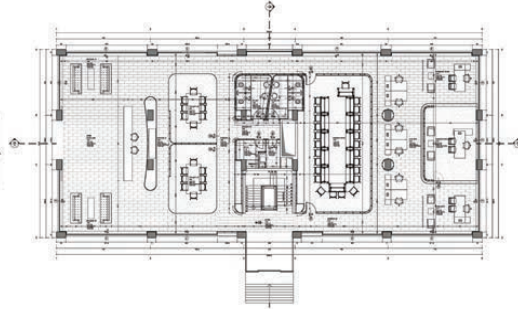




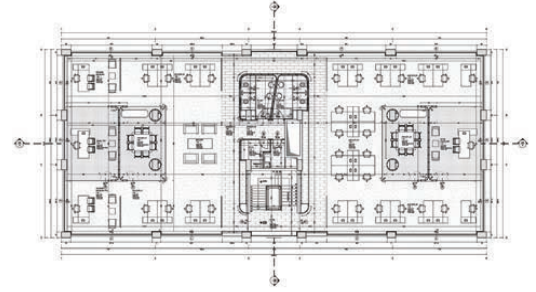




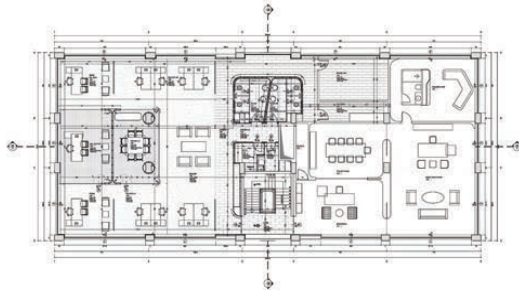
+4,73 KOTU | 1. KAT PLANI  
ÖLÇEK: 1/50



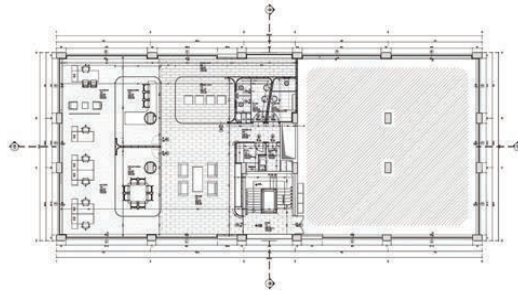
+1,36 KOTU | ZEMİN KAT PLANI  
ÖLÇEK: 1/50



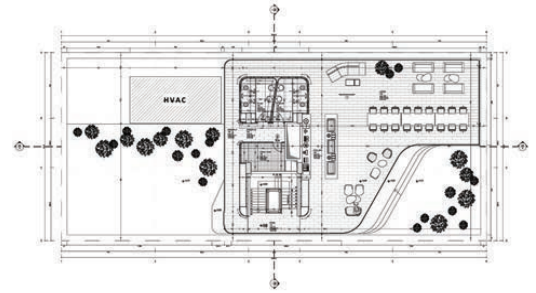
+4,73 KOTU | 1. KAT PLANI  
ÖLÇEK: 1/50



+8,07 KOTU | 2. KAT PLANI  
ÖLÇEK: 1/50



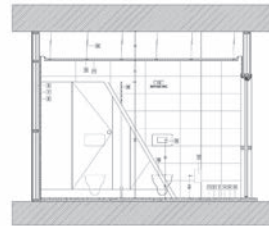
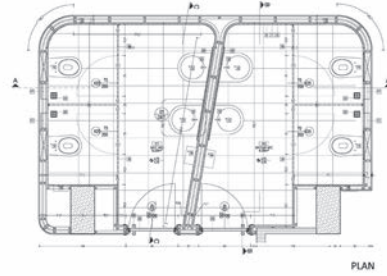
+11,39 KOTU | 3. KAT PLANI  
ÖLÇEK: 1/50



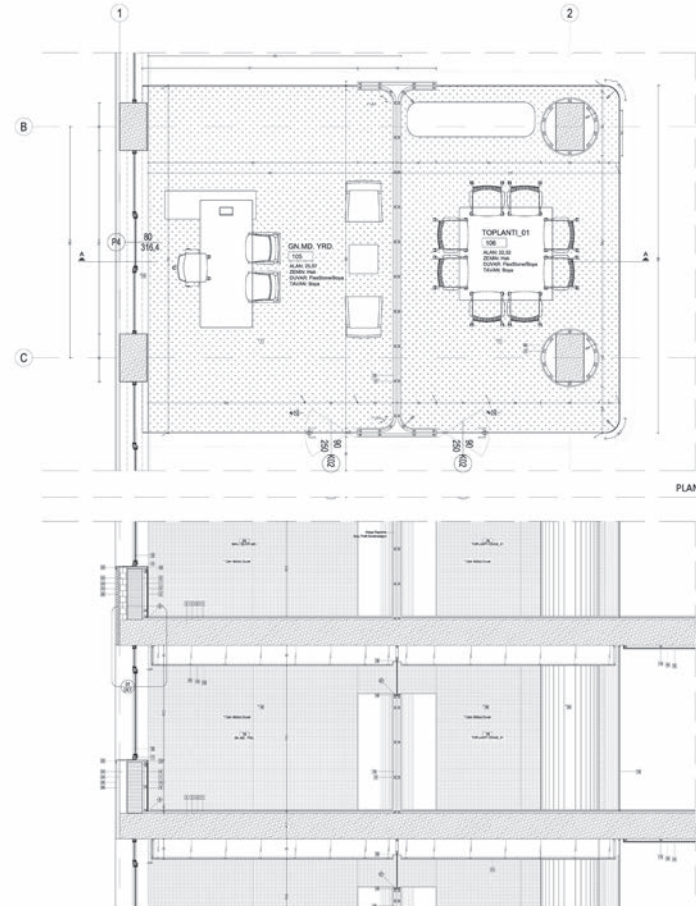
+14,77 KOTU | TERAS KAT PLANI  
ÖLÇEK: 1/50



- 1 BETONARME
- 2 SU YALITIMI
- 3 TESVİYE BETONU
- 4 ŞAP
- 5 YAPIŞTIRICI
- 6 SERAMİK
- 7 KABA SIVA-YAPIŞTIRICI
- 8 DUVAR
- 9 ASKI APARATI
- 10 GALVANİZ KARKAS
- 11 ASMA TAVAN
- 12 LAVABO
- 13 LAVABO BATARYASI
- 14 GÖMME REZERVUAR BUTONU
- 15 ASMA KLOZET
- 16 ANKASTRE TUVALET KAĞITLIĞI
- 17 ANKASTRE ÇÖP KUTUSU
- 18 KAMPAKT LAMİNAT BÖLÜCÜ DUVAR
- 19 FOTOSELLİ EL KURUTMA MAKİNASI
- 20 FLOTAL AYNA+YAPIŞTIRICI+MDF
- 21 AYDINLATMA ELEMANI
- 22 YER SÜZGEÇİ
- 23 ALUMİNYUM KASA-KANAT, SÜT LAMİNE CAMLI
- 24 KAPI KOLU (HAFELE)

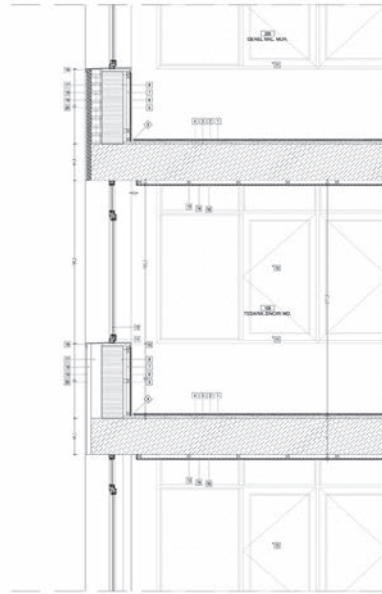


- 1 HALI
- 2 YAPIŞTIRICI
- 3 ŞAP
- 4 DÖŞEME
- 5 SIVA+BOYA
- 6 ALÇI LEVHA
- 7 KUTU PROFİL
- 8 DUVAR
- 9 KENAR FUGASI
- 10 DENİZLİK
- 11 PENCERE KASA+KANAT
- 12 ISI CAM
- 13 GALVANİZ ASMA TAVAN KARKAS
- 14 ASMA TAVAN ALÇI LEVHA
- 15 ASMA TAVAN SIVA+BOYA
- 16 LAMİNE BÖLÜCÜ CAM DUVAR
- 17 40X40mm KUTU PROFİL KARKAS
- 18 FLEXSTONE TAŞ KAPLAMA
- 19 LAMİNE CAM PROFİL
- 20 MDF KOLON KAPLAMA
- 21 GİZLİ IŞIK FLORASAN
- 22 DENİZLİK
- 23 GAZBETON
- 24 XPS
- 25 DIŞ CEPHE SIVASI
- 26 DIŞ CEPHE BOYASI

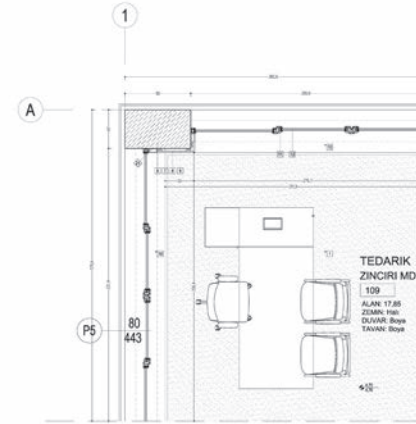


DETAY 01 TOPLANTI / MÜDÜR ODASI  
ÖLÇEK: 1/20

- 1 HALI
- 2 YAPIŞTIRICI
- 3 ŞAP
- 4 DÖŞEME
- 5 SIVA+BOYA
- 6 ALÇI LEVHA
- 7 KUTU PROFİL
- 8 DUVAR
- 9 KENAR FUGASI
- 10 MEVCUT DENİZLİK
- 11 PENCERE KASA+KANAT
- 12 ISI CAM
- 13 ASMA TAVAN KARKAS
- 14 ASMA TAVAN ALÇI LEVHA
- 15 ASMA TAVAN SIVA+BOYA
- 16 DENİZLİK
- 17 GAZBETON
- 18 XPS
- 19 DIŞ CEPHE SIVASI
- 20 DIŞ CEPHE BOYASI
- 21 50\*100 PENCERE YALITIM PROFİLİ



KESİT

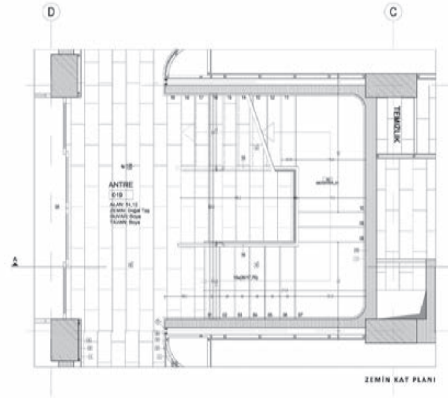


PLAN

DETAY 06 AÇIK OFİS  
ÖLÇEK: 1/20

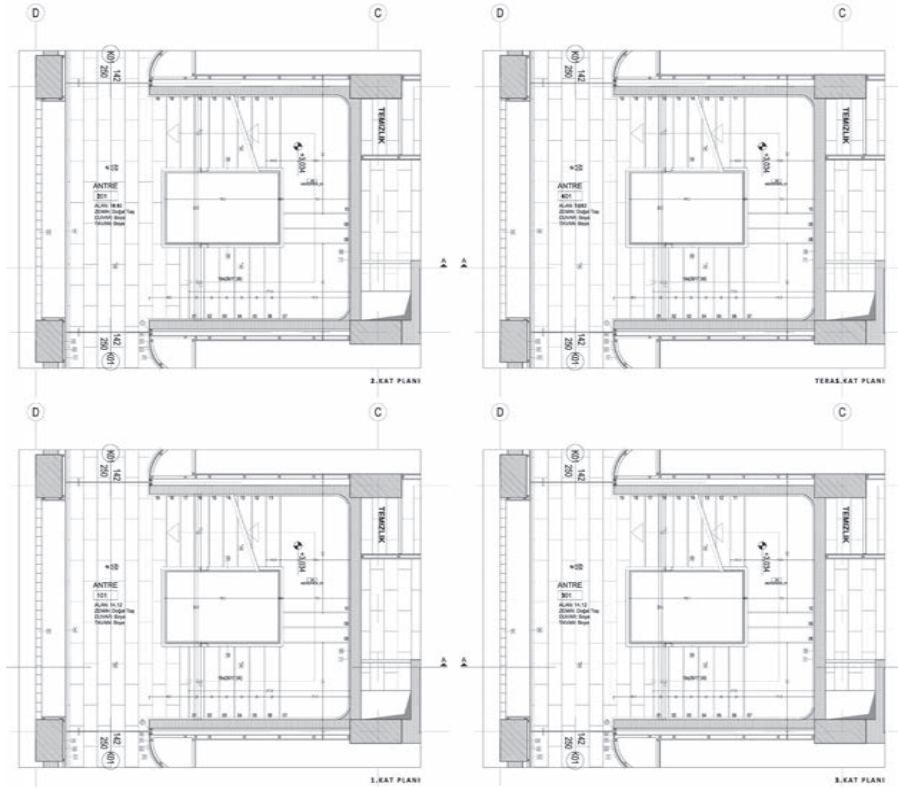


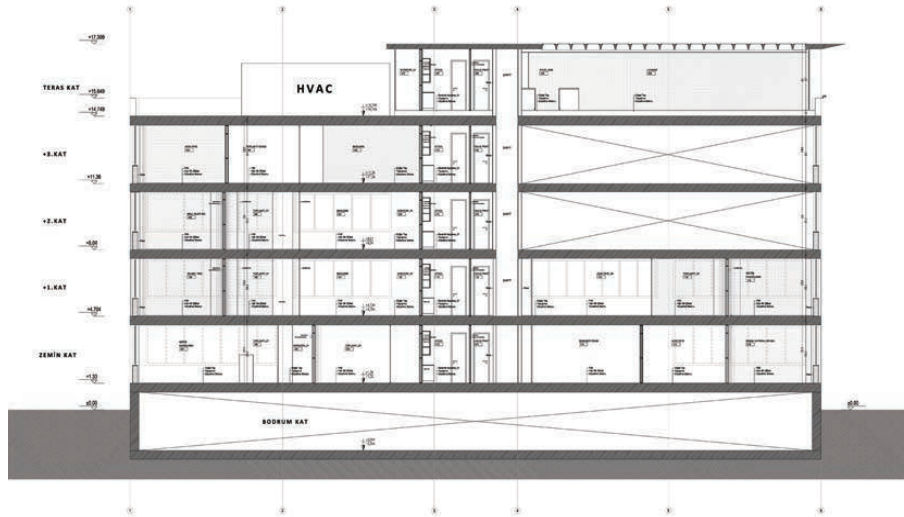
- 1 SIVA+BOYA
- 2 ALÇI LEVHA
- 3 28X40 mm DEMİR KONSTRUKSİYON
- 4 CAM TUĞLA DUVAR
- 5 LAMİNE CAM BÖLÜCÜ DUVAR
- 6 24X40mm DEMİR KONSTRUKSİYON
- 7 U KÖŞE ÇİTASI (KAPAMA)
- 8 DOĞAL TAŞ ALPAMA
- 9 DOĞAL TAŞ MERDİVEN BASAMAKLARI
- 10 PASLANMAZ METAL KÜPEŞTE / Ø 5 cm
- 11 PASLANMAZ METAL DUVAR BAĞLANTI / Ø 2,5 cm
- 12 PASLANMAZ METAL BAĞLANTI ELEMANI
- 13 PASLANMAZ METAL BAĞLANTI ELEMANI
- 14 DUVAR ANKRAJ YUVASI
- 15 MERDİVEN MEVCUT DUVAR
- 16 MERDİVEN MEVCUT BASAMAK
- 17 SÜPÜRGELİK HAVUZ ÇİTASI
- 18 YAPIŞTIRICI
- 19 DÜZELTME BETONU
- 20 ASMOLEN DÖŞEME
- 21 ASMA TAVAN KARKAS
- 22 ASMA TAVAN ALÇI LEVHA
- 23 ASMA TAVAN SIVA+BOYA
- 24 LAMİNE CAM PROFİLİ
- 25 MERDİVEN KORKULUK CAMI
- 26 PASLANMAZ METAL BAĞLANTI ELEMANI
- 27 PASLANMAZ METAL BAĞLANTI ELEMANI
- 28 DUVAR ANKRAJ YUVASI
- 29 FOTOSELLİ KAYAR KAPI



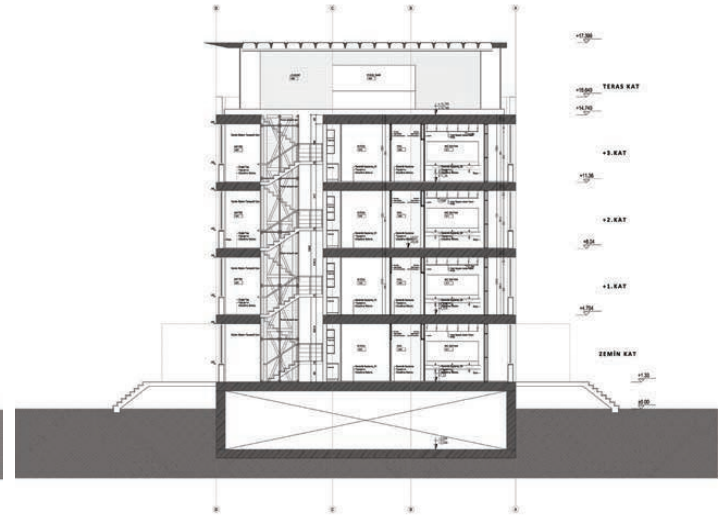
DETAY 03 MERDİVEN 01  
ÖLÇEK: 1/20

- 1 SIVA+BOYA
- 2 ALÇI LEVHA
- 3 28X40 mm DEMİR KONSTRUKSİYON
- 4 CAM TUĞLA DUVAR
- 5 LAMİNE CAM BÖLÜCÜ DUVAR
- 6 24X40 mm DEMİR KONSTRUKSİYON
- 7 U KÖŞE ÇİTASI (KAPAMA)
- 8 DOĞAL TAŞ KAPLAMA
- 9 DOĞAL TAŞ MERDİVEN BASAMAKLARI
- 10 PASLANMAZ METAL KÜPEŞTE / Ø 5 cm
- 11 PASLANMAZ METAL DUVAR BAĞLANTI / Ø 2,5 cm
- 12 PASLANMAZ METAL BAĞLANTI ELEMANI
- 13 PASLANMAZ METAL BAĞLANTI ELEMANI
- 14 DUVAR ANKRAJ YUVASI
- 15 MERDİVEN MEVCUT DUVAR
- 16 MERDİVEN MEVCUT BASAMAK
- 17 SÜPÜRGELİK HAVUZ ÇİTASI
- 18 YAPIŞTIRICI
- 19 DÜZELTME BETONU
- 20 ASMOLEN DÖŞEME
- 21 ASMA TAVAN KARKAS
- 22 ASMA TAVAN ALÇI LEVHA
- 23 ASMA TAVAN SIVA+BOYA
- 24 LAMİNE CAM PROFİLİ
- 25 MERDİVEN KORKULUK CAMI
- 26 PASLANMAZ METAL BAĞLANTI ELEMANI
- 27 PASLANMAZ METAL BAĞLANTI ELEMANI
- 28 DUVAR ANKRAJ YUVASI
- 29 FOTOSELLİ KAYAR KAPI





KESİT A-A  
ÖLÇEK: 1/50



KESİT B-B  
ÖLÇEK: 1/50



---

# EGD

Management Office

---

**CLIENT** E.G.D.  
**LOCATION** Pendik, İstanbul  
**TYPE** Fabrika ve Yönetim Binası

**CONSTRUCTION AREA** 280 m<sup>2</sup>  
**PROJECT AREA** 280 m<sup>2</sup>  
**PROJECT DATE** 2011  
**STATUS** Tamamlandı

**ARCHITECT** Serkan Atilla Cedetaş  
**DESIGN TEAM**  
**CONSTRUCTION** Cedetaş Mimarlık  
**ELECTRIC** MC Elektrik

**MECHANICAL** Aksan Mühendislik  
**LIGHTING** Total Aydınlatma  
**PHOTOGRAPHY** Cemal Emden

---

## **An inspiring volume of design without having absolute boundaries of exact physical boundaries and absolute order**

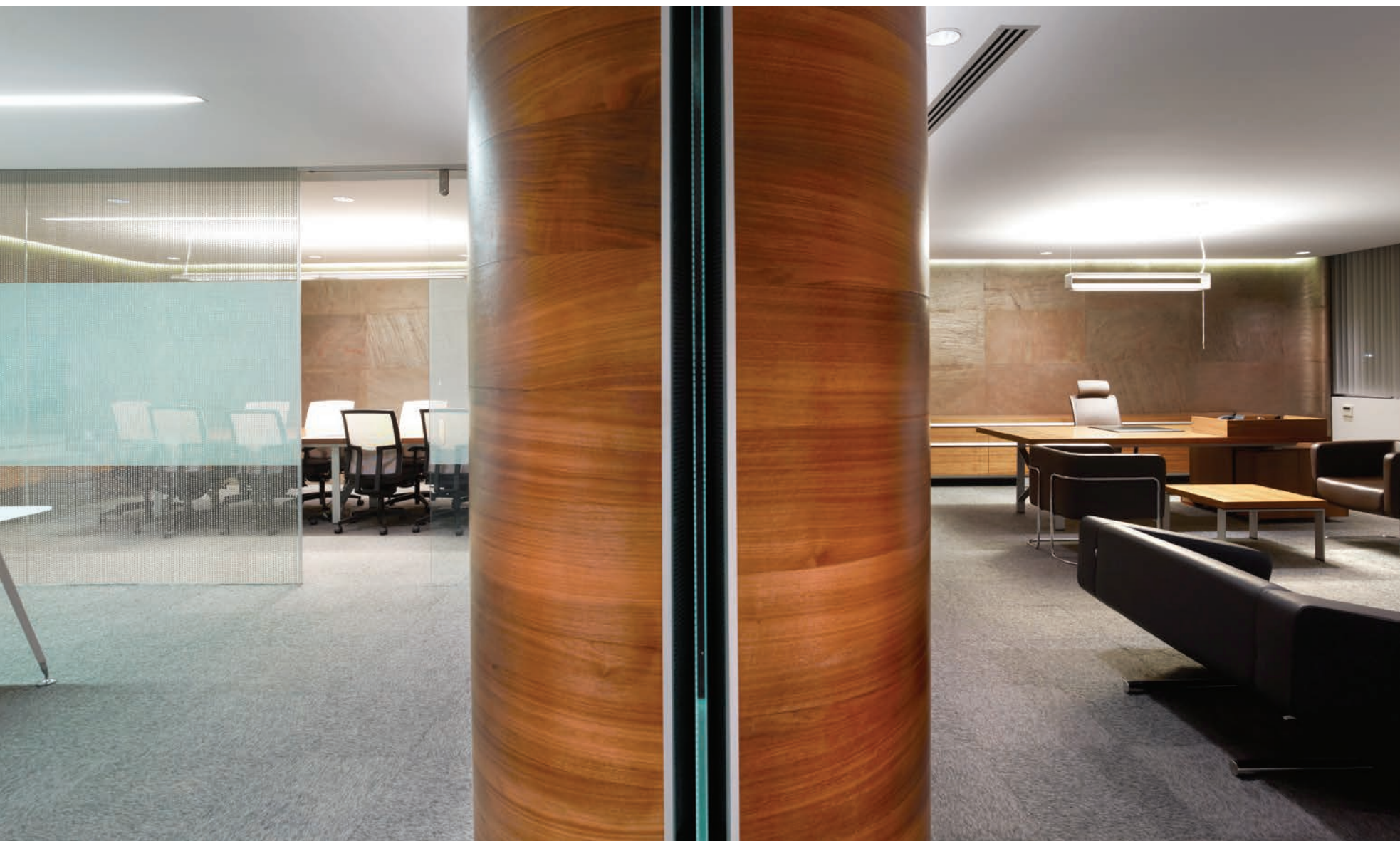
In the process of transforming the closed tissues to an open office design time, space transitions were provided with a vertical separation that make up centre island.

Surfaces flow into the spaces and the description of the locations are provided with the differences of volumes.





















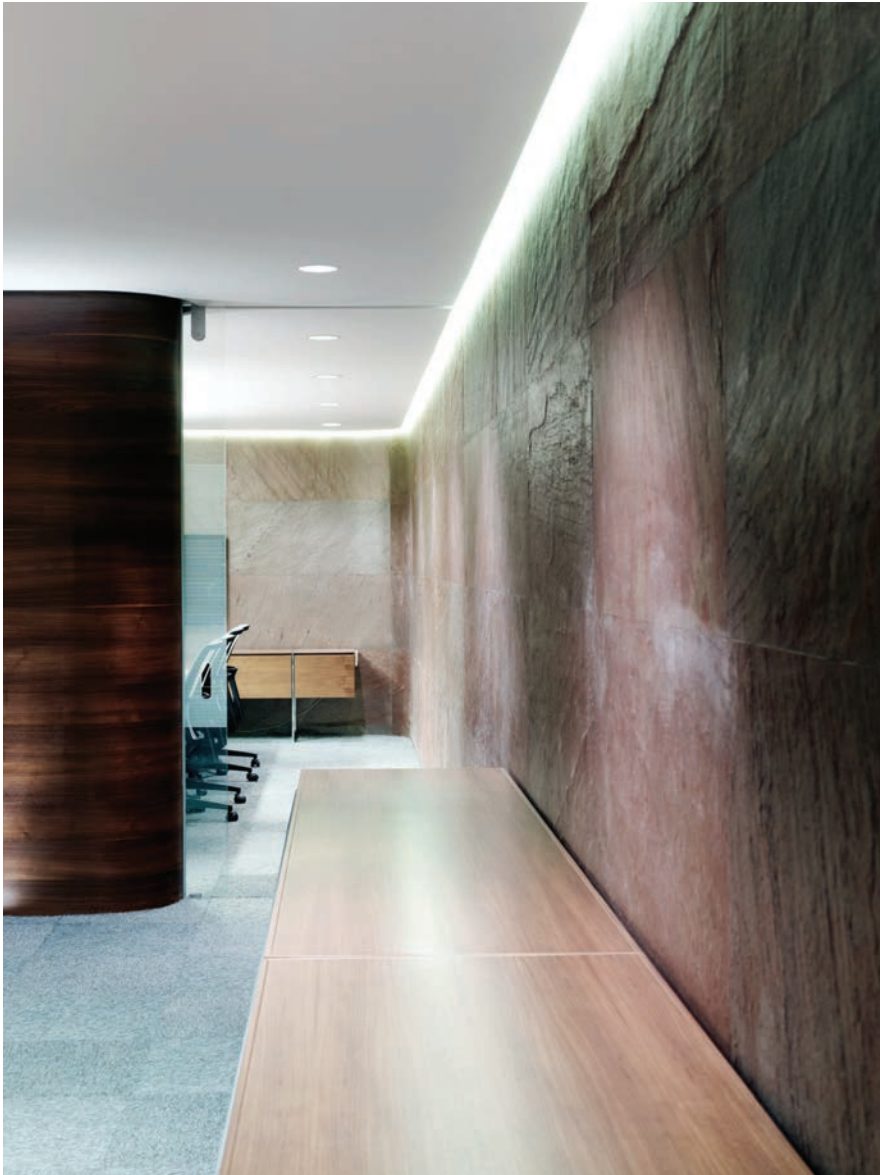






























# Beşiktaş Fish Market v.02

Renovation

**CLIENT** Beşiktaş Belediyesi  
**LOCATION** Beşiktaş, İstanbul  
**TYPE** Alışveriş

**CONSTRUCTION AREA** 480 m<sup>2</sup>  
**PROJECT AREA** 480 m<sup>2</sup>  
**PROJECT DATE** 2013  
**STATUS** Tamamlandı

**ARCHITECT**  
**DESIGN TEAM** Ozan Can Er  
**CONSTRUCTION** Cedetaş Mimarlık  
**ELECTRIC** Pover Mühendislik

**MECHANICAL** Açıkalin Yapı  
**LIGHTING** Pover Mühendislik  
**PHOTOGRAPHY** Cedetaş + Gad

---

## **Besiktas Fish Market, hand once more designed through and became more useful.**

“With the design process the Köyiçi Street in the fish market, which is the main pedestrian circulation supplying the market, was decided to be the focal point of the Project.

The former island shaped plan in 2009 replaced with an arc-shaped fiction. Due to the changes the Street pedestrian traffic expanded and this new settlement got the shape of the new fish market in Köyiçi Street. The new public square that occur in and the new sales counters around the square take their place in the program.

They were redesigned and manufactured with the thought of the most comfortable, ergonomic, sturdy,hygienic way of the market goers passing. In the rear sections ,the work benches were placed below the stainless steel surface to keep the fish fresh with the help of hidden cooling systems. In addition to this drainages were added not to disturb anyone with fish water and

top hangerswere designed to brighten the counters and also elements like weighing - bag - signs to be hanged on it.

Ease of use and quality increased by adding many details, to every fish sales counter such as infrastructure of internet, private water, electricity and telephone.

Besiktas Fish Market exposed to harsh weather like wind and rain especially from the Bosphorus side. To mitigate the impact of this bad weather conditions cable-supported tent was designed to the frontage. During the desingn period of the tent, reducing the meteorological effects was taken in to consideration but the perspective of the Fish Market was always the balance point. While selecting the materials, we paid attention not to choose the ordinary membrane, rather than it a rain proof, like a fishing net, ventilation providing product was preferred.



---

## Besiktas Bazaar Shooting Center: Fish Market\*

Besiktas Fish Market has been renewed once again using opportunity of the ban months of hunting in the summer once again. This time the architect Serkan Atilla Cedetaş was at the beginning of the project. Cedetaş told the studies of the market that is redesigned to become more useable like this:

"Besiktas Fish Market has been projected with the support of Besiktas restaurants, tradesmen and citizens and especially the contribution of the president İsmail Ünal's personal support in 2009.

This is a project which has an international award. Besiktas In particular is one of the important public scales created in Istanbul. In this second period of renewal, we eliminated the wear that occurred in this important project and re-examined the architectural design solutions

to make it renew and assumed the construction of the application to give answer to the demands of the new users.

"The Shell was smoothed away the problems of isolation during the structural renovation shell, escaped the problems of isolation "

Serkan Atilla Cedetaş says and continues:

"All electrical and mechanical systems are renewed. Infrastructure installations changed. Surface corruptions are removed, the measures taken to extend the life of the material. "

## Rain, wind resistant design

Fish sales counters, taking the opinion of the trades, market-goers the most comfortable way in which they can exchange ergonomics and durability, redesigned and hygiene in mind, have been made. work benches in the rear section, under all stainless steel surfaces, keep the fish fresh cooling systems established secret. This, as well as fish to water drains away without disturbing anyone, to illuminate the counters and also weighing - bags - signs can be hung with the top strap of such elements, each fisherman a special water, electricity, telephone and internet infrastructure, such as adding to the many details of fish sales counter, ease of use and quality have increased.

Besiktas Fish Market, particularly exposed to influences such as wind and rain towards the Bosphorus. Architecture team, the front suspension to alleviate the worst effects - stretching awnings made systematic design.

Tent designed, to reduce meteorological effects, but has favored a balance perspective break to level the space creates the perception of the Fish Market. Material selection is made, instead of an ordinary membrane, reminiscent of a fishing net in the form of the network, providing ventilation, but a product that has been preferred to spend the whirlpool and rain.

\* B + Magazine, fall, 13/22









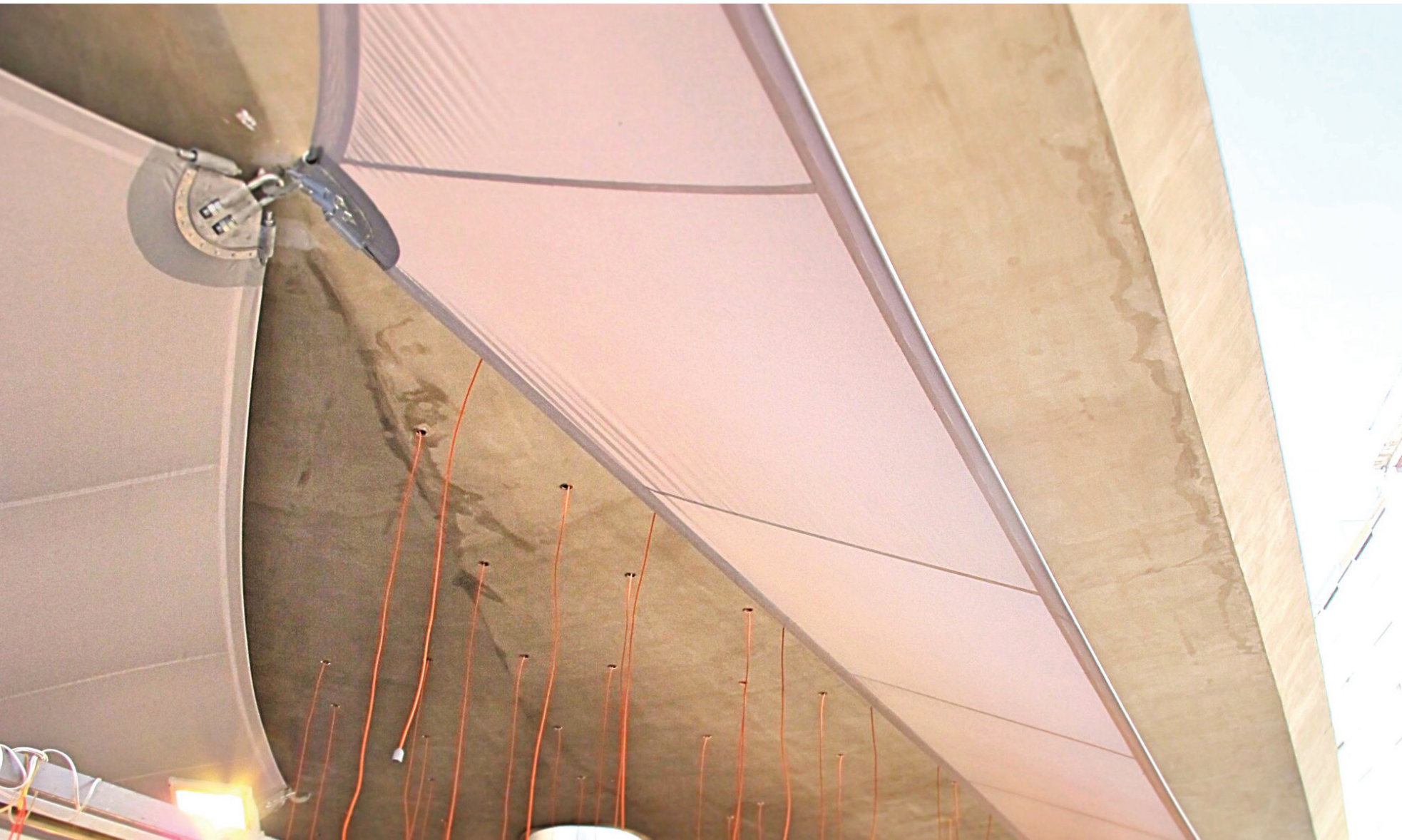






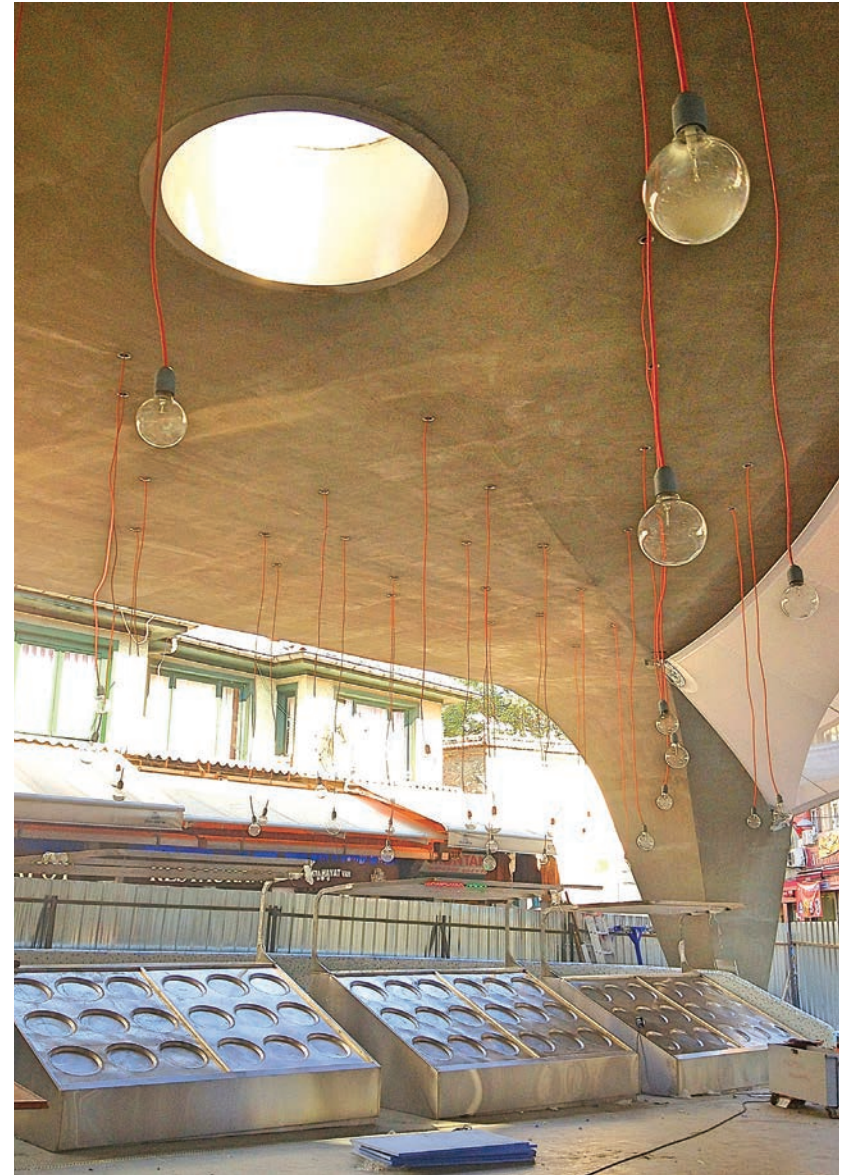




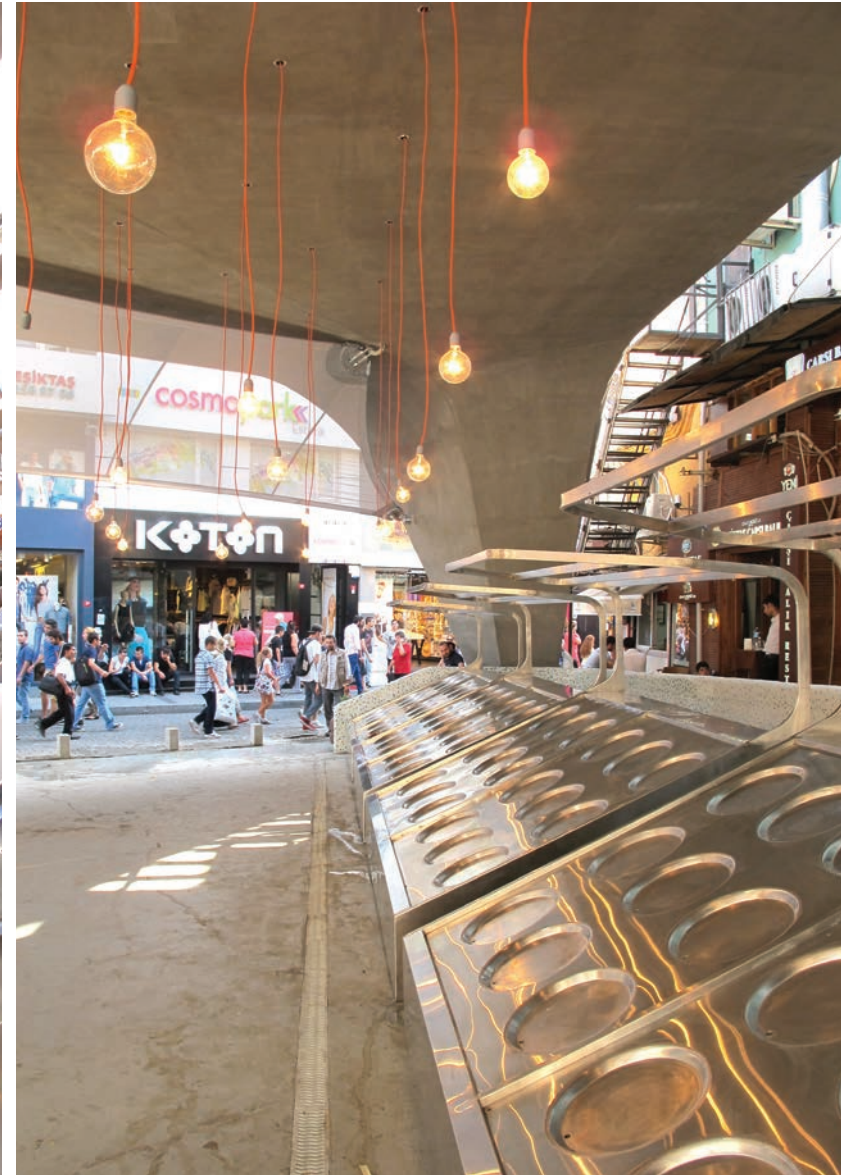




## Beşiktaş Fish Market v.02 Renovation











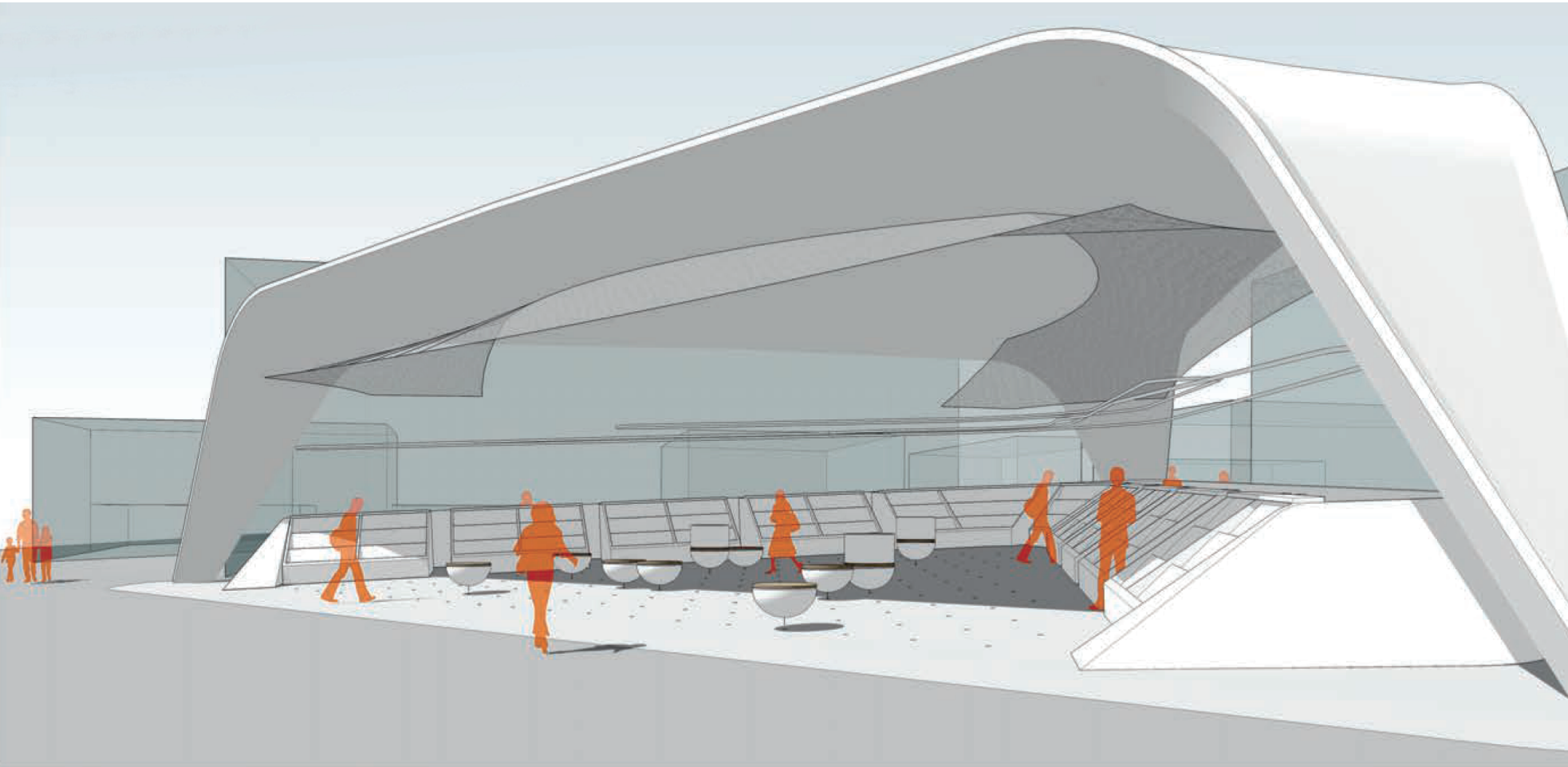


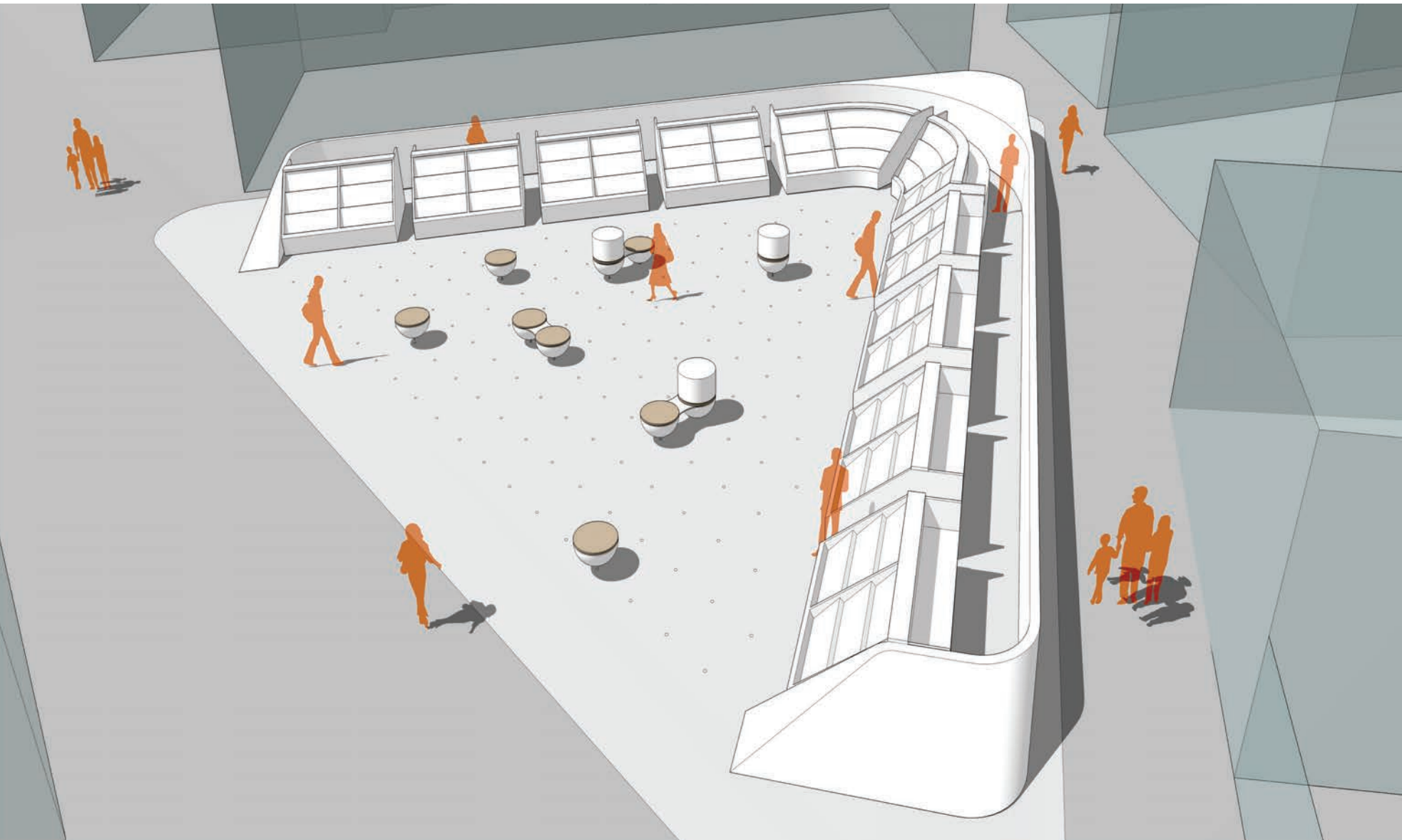




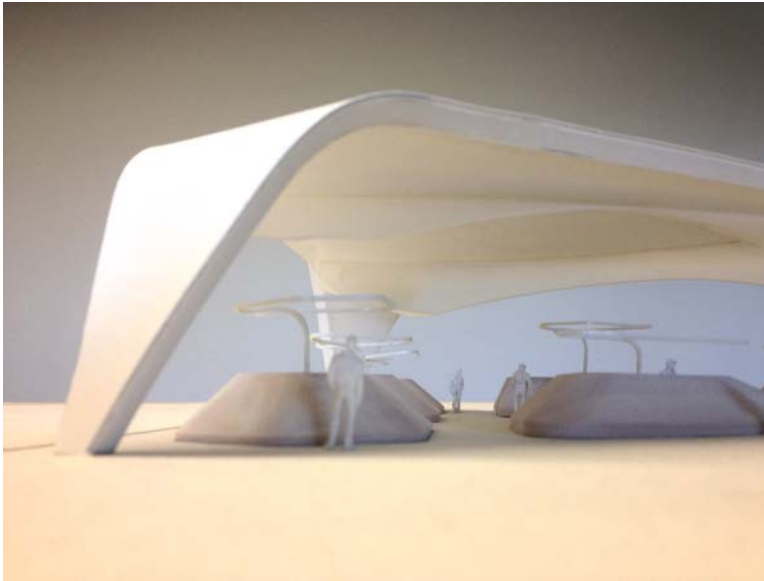
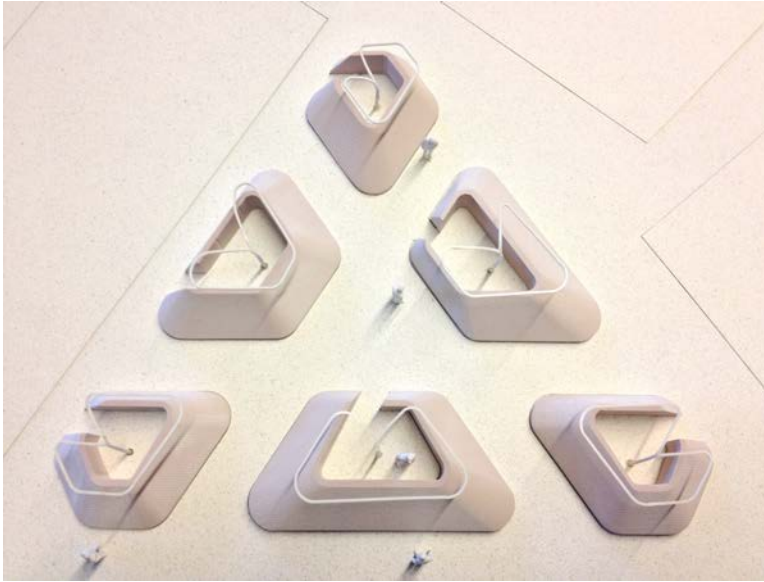












İzlenim

Güvenlik

Hesaplamalar

Güvenlik

Hesaplamalar

İzlenim

Güvenlik

Hesaplamalar

İzlenim





# Uşak Municipality

Town Hall

**CLIENT** Uşak Municipality  
**LOCATION** Uşak  
**TYPE** Belediye Binası

**CONSTRUCTION AREA**  
**PROJECT AREA** 8.057 m<sup>2</sup>  
**PROJECT DATE** 2012  
**STATUS** Tamamlandı

**ARCHITECT** Serkan Atilla Cedetaş  
**DESIGN TEAM** Ozan Can Er, Ezgi Üçüncü  
**CONSTRUCTION** Ferhat Baş  
**ELECTRIC** İbrahim Aktaş

**MECHANICAL** Selçuk Avcı

---

**“Möbius Strip:**

**An Architectural problem...**

**A strip obtained by bending one end of the strip to the other end 180 grades and the connection of them. The single faced strip can be described as not having the flexibility. While in a normal strip there are two sides, whereas in a Mobius strip there is only one side. So from a point on the Möbius strip When the whole area is started to move scanning returns to the same spot. "**

Design is established on three main approaches, (City Wall in the North - Recreation Area in the south - Pedestrian Approach in the West) and two main views related to them. Municipal functions are positioned in the north of the city wall; and the social areas are positioned into the area of the recreation sites.

Between the intersection consisted from this two main sessions, the vertical spatial stream was provided. Courtyard, observation deck and the centrelines at the entrance of the multipurpose hall between the courtyard are fed spatially with the connection between them.

The entrance representing the municipal courtyard, not only allows access to services for scholars on the North side, but also provides social interection related to the recreation and undertakes the task of being a passage.

The atrium facing the entence of the Municipal, is structured right in the middle of the mass. It provides advantages such as ease of circulation and light. It gives the sense of interior comfort. Interior arrangement was thought with the idea of open office, accessible, easy to define concept. Areas requested for secondary access like the Police were considered in the lower ground level.



A Service Area was thought on the 1 St Floor as a response for the needs of the staff occurred from the intersection of the centerline, at the back of the Office Department.

The West side arises as the the beginning of the Recreation Area comes up as the observation deck with the pedestrians needs and the city square. There is a nursery playground and a cafeteria intended with the recreation and the courtyard ,under the observation deck which is used as a plateau.

At the line representing the rear end of the building ,there is a multi-purpose hall and the back courtyard which is the exist of the secondary access points.It is planned at the ground floor.

The multi-purpose hall will be done under the hall of ground floor and with a wide open area.

The same building system will include the observation deck also. All space fiction was fictionalized to flow into each other and rather than just a visual image ;,st is surrounded with Shell in order to provide the spatial unity.

The Shell that covers the structure takes its' form from the geometric and arthitecturally problematic strip of möbius and the architecture of a problematic strip möbius.



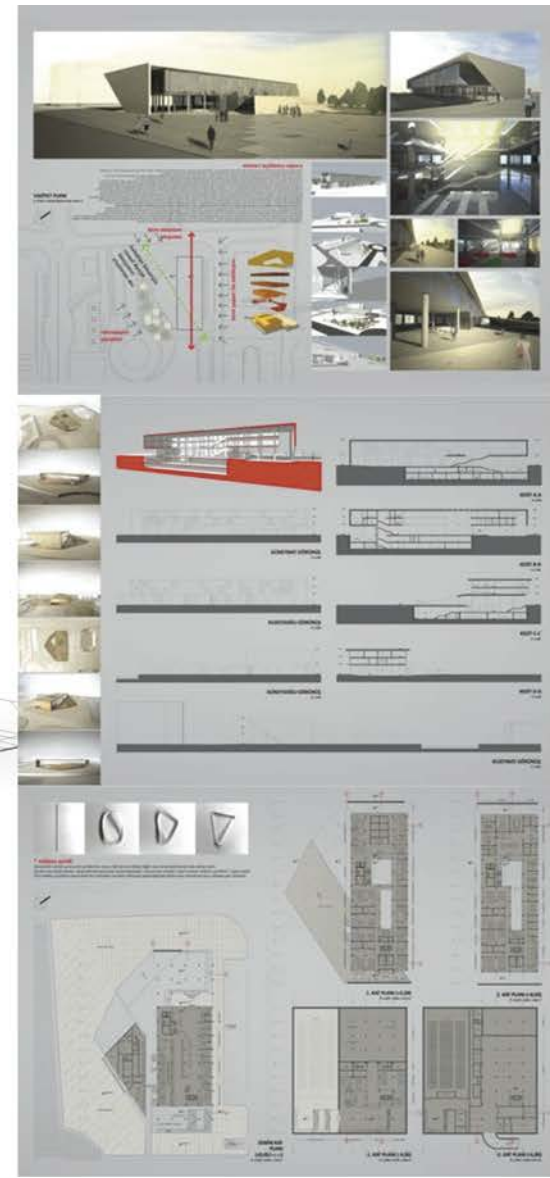
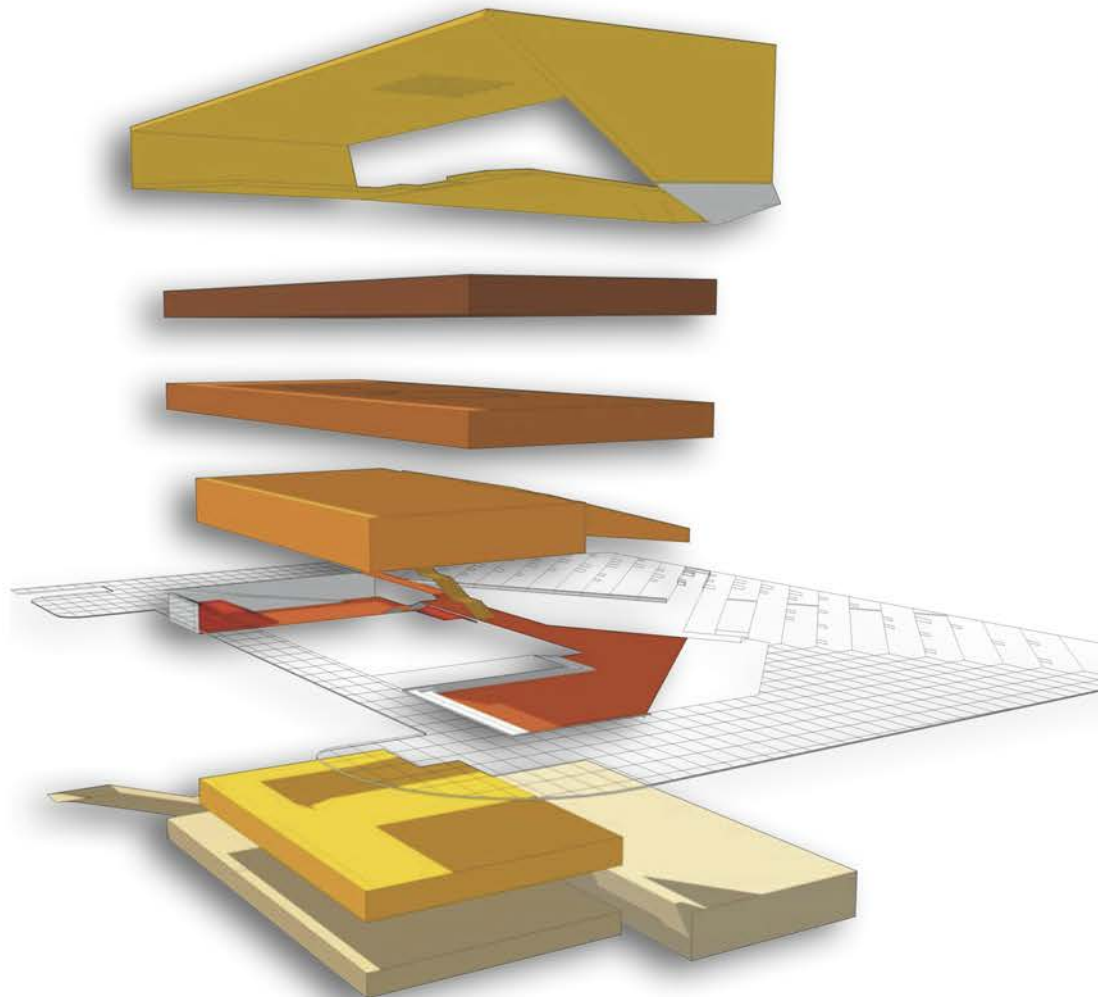




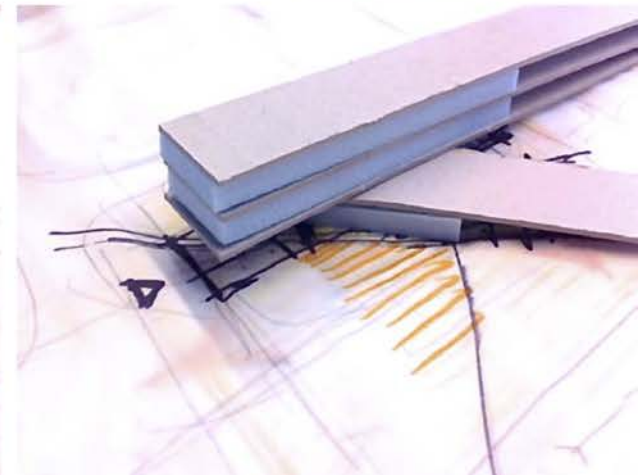
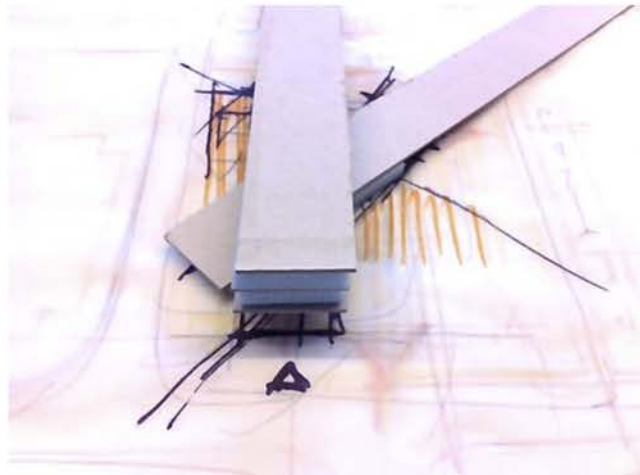
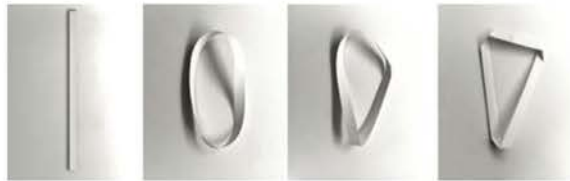
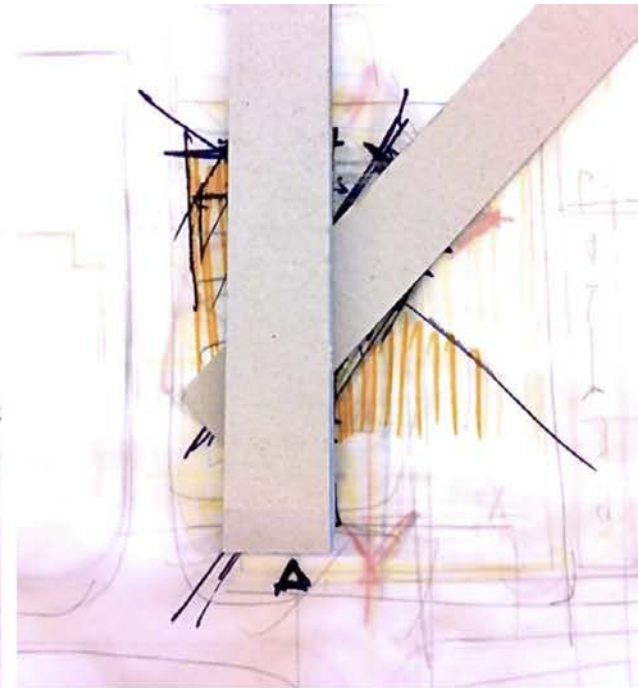
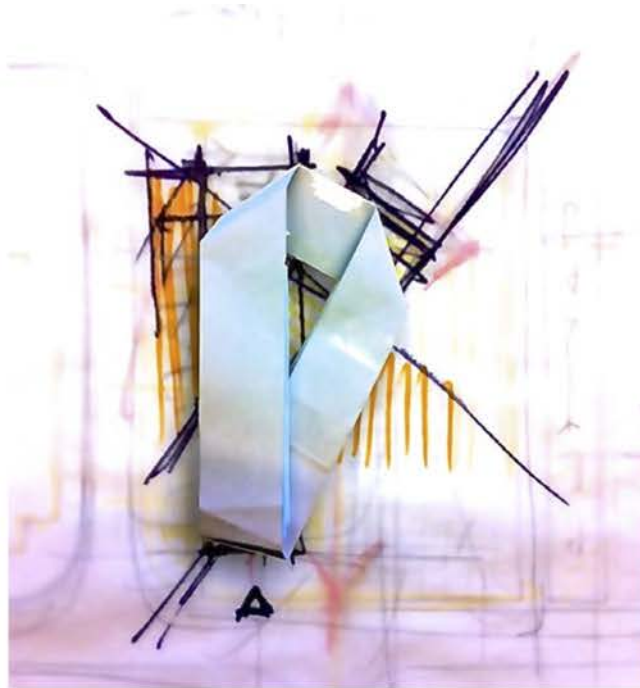






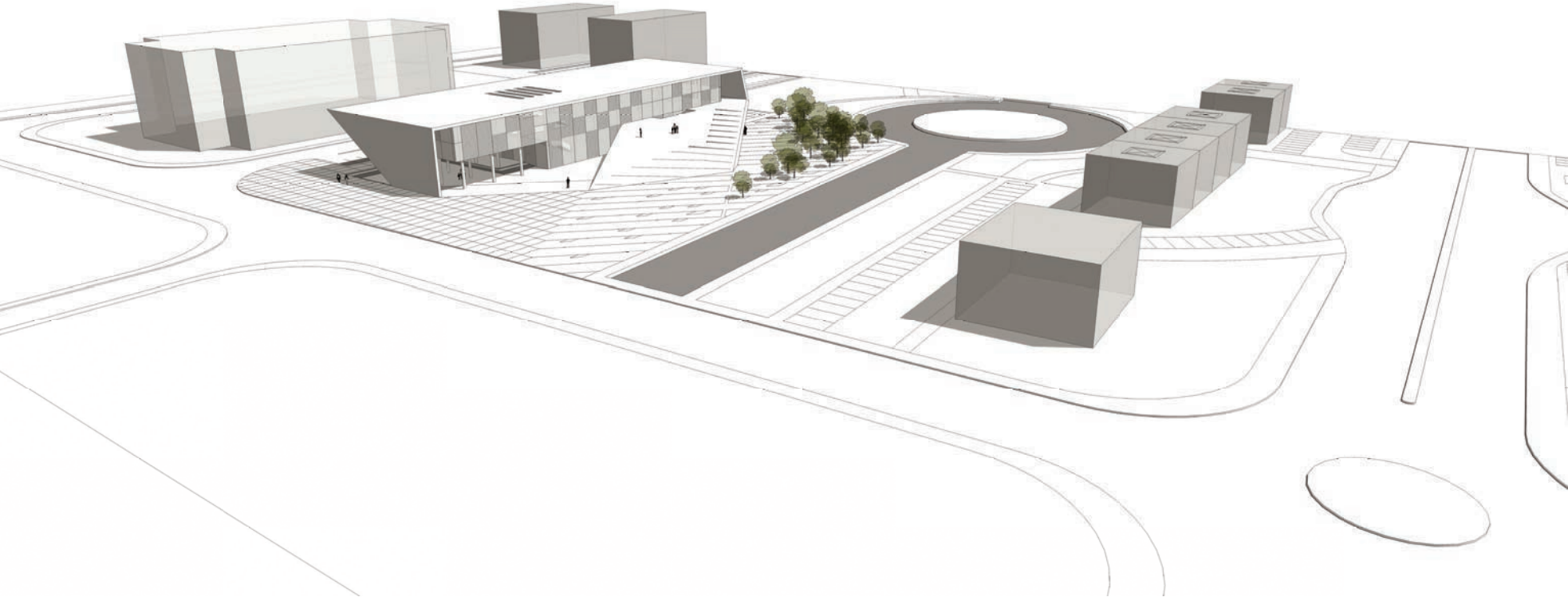


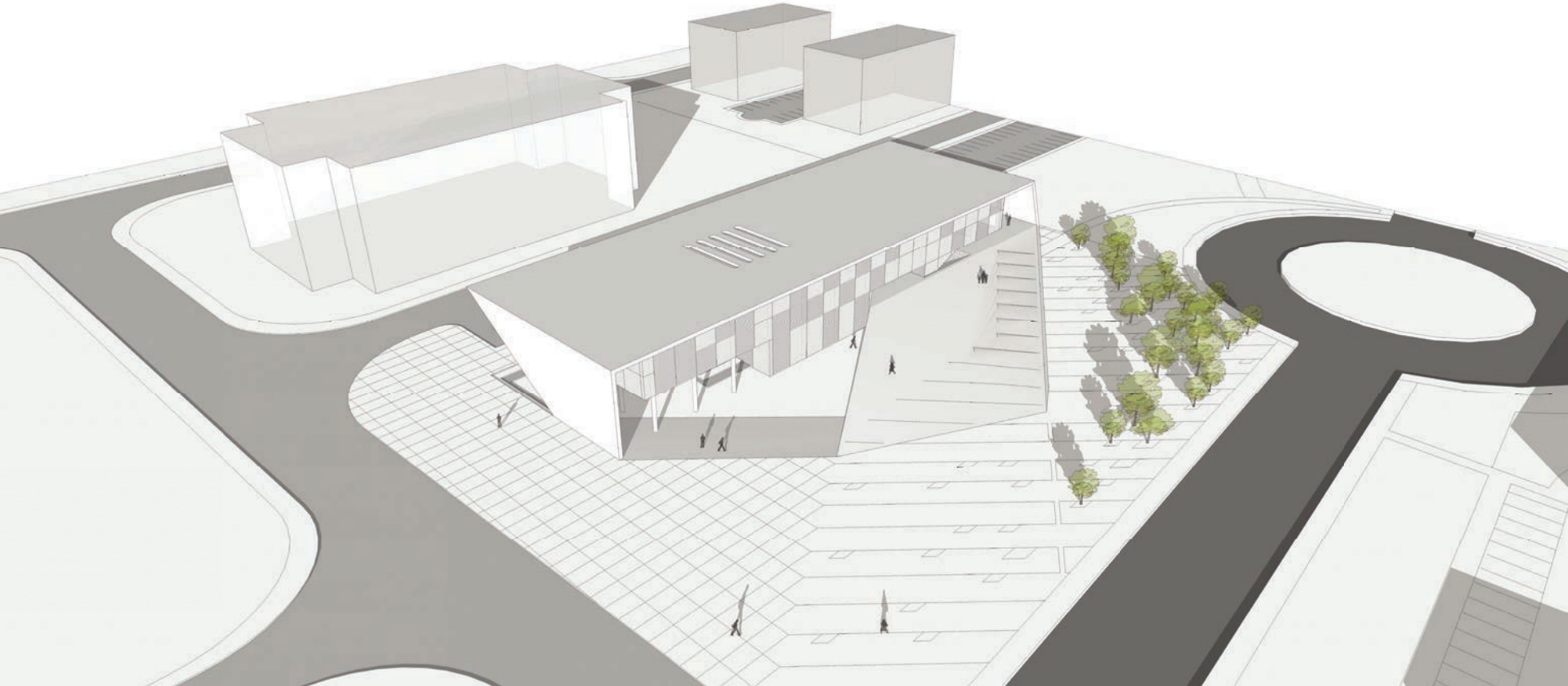




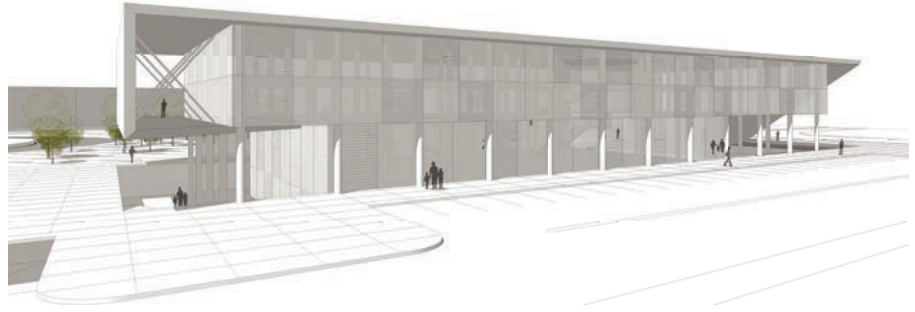
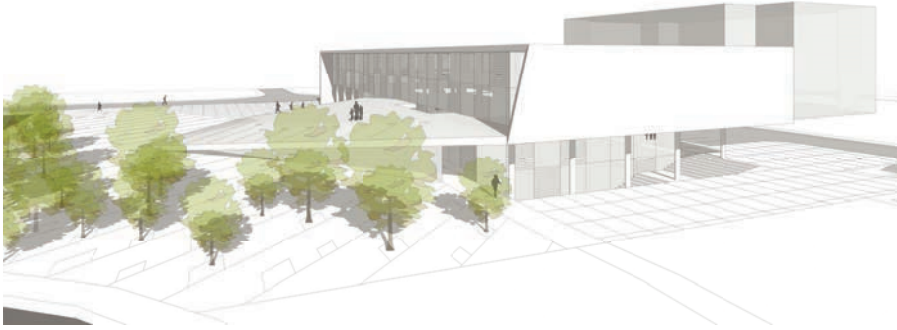
















# Eren

Factory + Offices

**CLIENT** Eren Elektrik A.Ş.  
**LOCATION** Pendik, İstanbul  
**TYPE** Fabrika ve Yönetim Binası

**CONSTRUCTION AREA** 1.500 m<sup>2</sup>  
**PROJECT AREA** 1.500 m<sup>2</sup>  
**PROJECT DATE** 2013  
**STATUS** Tamamlandı

**ARCHITECT** Serkan Atilla Cedetaş  
**DESIGN TEAM** Ozan Can Er, Ezgi Üçüncü  
**CONSTRUCTION** Cedetaş Mimarlık  
**ELECTRIC** Pover Mühendislik

**MECHANICAL** Açıklın Yapı  
**LIGHTING** Silikon  
**GRAPHIC DESIGN** Ülker  
**PHOTOGRAPHY** Ali Bekman

## **Easy to understand, simple.**

The design process started with the purpose of exing in a new time and space dream, rather than exising inside its' old industrial identity. The process was resulted with ease of application and the target of being useful.

















**Cedetař Architecture Ltd**

Eski Baędat Cd. 27/1 Altıntepe 34840 Istanbul Turkey

T +90 216 3676570

F +90 216 3676575

[www.cedetas.com](http://www.cedetas.com)

---